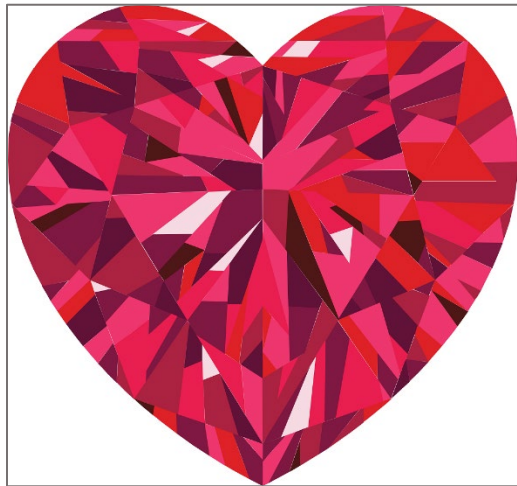


ANNIE COLORWAY CLUB FABRIC SUGGESTIONS: PYROPE GARNET



A



K = 1295 Pomegranate
 MB = 410 Sangria
 PP = 068 Rosebud
 C = 1250 Fuchsia
 MM = FUSC
 FS = Cajun*

E



K = 1016 Berry
 MB = 113 Barn Door
 PP = 150 Wine
 C = 0120 Salsa
 MM = POME
 FS = Rio Red

B



K = 1194 Lipstick
 MB = 382 Ruby
 PP = 092 Real Red
 C = 0220 Poppy
 MM = WATE
 FS = Rouge

F



K = 1039 Bordeaux
 MB = 217 Boysenberry
 PP = 030 Bordeaux
 C = 1200 Berry Stain
 MM = SPIC
 FS = Cherry

KEY:

K = Kona Cotton Solids

MB = Moda Bella Solids

PP = Painter's Palette by
 Paintbrush Studio Fabrics

C = Cherrywood Hand-Dyed Fabric

MM = Michael Miller Cotton Couture

FS = Free Spirit/Tula Pink Solids*

C



K = 481 Sangria
 MB = 328 Garnet
 PP = 073 Sangria
 C = 1240 Hot Pink
 MM = PAPR
 FS = Radish

G



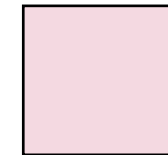
K = 1054 Burgundy
 MB = 238 Prune
 PP = 080 Amethyst
 C = 0100 Merlot
 MM = GARN
 FS = Merlot

D



K = 1049 Br. Pink
 MB = 223 Shocking Pink
 PP = 078 Bubblegum
 C = 0170 Raspberry
 MM = MAGE
 FS = Stargazer

H



K = 24 Petunia
 MB = 249 Freesia
 PP = 018 Petal
 C = 1280 Candy
 MM = BLOS
 FS = Giggles*