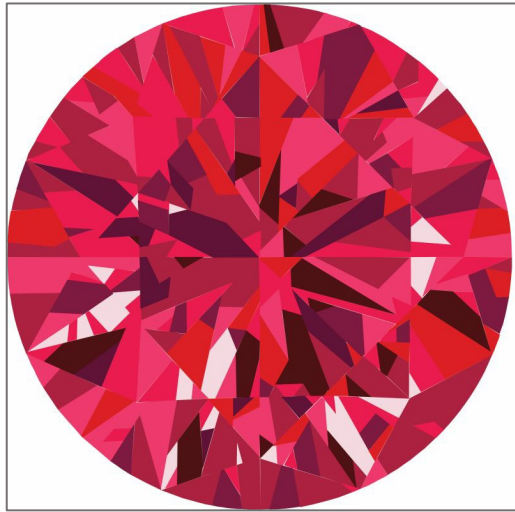


CATHERINE COLORWAY CLUB FABRIC SUGGESTIONS: ALMANDINE GARNET



KEY:

K = Kona Cotton Solids

MB = Moda Bella Solids

PP = Painter's Palette by
Paintbrush Studio Fabrics

C = Cherrywood Hand-Dyed Fabric

MM = Michael Miller Cotton Couture

FS = Free Spirit/Tula Pink Solids*

A



K = 1295 Pomegranate
MB = 410 Sangria
PP = 068 Rosebud
C = 1250 Fuchsia
MM = FUSC
FS = Cajun*

B



K = 1194 Lipstick
MB = 382 Ruby
PP = 092 Real Red
C = 0220 Poppy
MM = WATE
FS = Rouge

C



K = 481 Sangria
MB = 328 Garnet
PP = 073 Sangria
C = 1240 Hot Pink
MM = PAPR
FS = Radish

D



K = 1049 Br. Pink
MB = 223 Shocking Pink
PP = 078 Bubblegum
C = 0170 Raspberry
MM = MAGE
FS = Stargazer

E



K = 1016 Berry
MB = 113 Barn Door
PP = 150 Wine
C = 0120 Salsa
MM = POME
FS = Rio Red

F



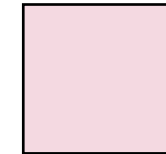
K = 1039 Bordeaux
MB = 217 Boysenberry
PP = 030 Bordeaux
C = 1200 Berry Stain
MM = SPIC
FS = Cherry

G



K = 1054 Burgundy
MB = 238 Prune
PP = 080 Amethyst
C = 0100 Merlot
MM = GARN
FS = Merlot

H



K = 24 Petunia
MB = 249 Freesia
PP = 018 Petal
C = 1280 Candy
MM = BLOS
FS = Giggles*