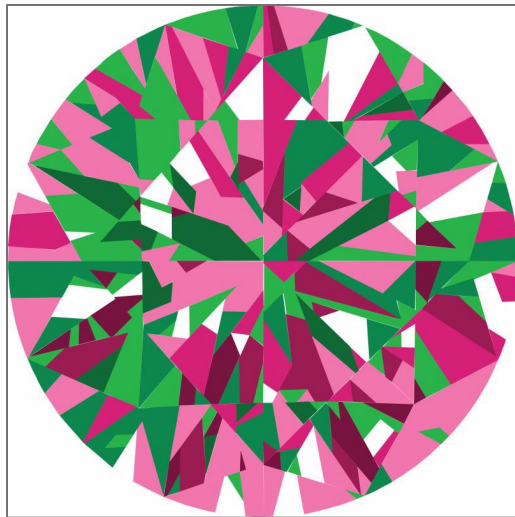


CATHERINE COLORWAY CLUB FABRIC SUGGESTIONS: DECEMBER'S HOLIDAY WAY



KEY:

K = Kona Cotton Solids

MB = Moda Bella Solids

PP = Painter's Palette by
Paintbrush Studio Fabrics

C = Cherrywood Hand-Dyed Fabric

MM = Michael Miller Cotton Couture

FS = Free Spirit/Tula Pink Solids

A



K = 1188 Kiwi
MB = 415 Parakeet
PP = 164 Jolly
C = 0760 Spearmint
MM = GREE
FS = GRASS

B



K = 490 Honeysuckle
MB = 223 Shocking Pink
PP = 068 Rosebud
C = 1250 Fuchsia
MM = MAGE
FS = Tropical

C



K = 1062 Candy Pink
MB = 91 Peony
PP = 148 Impatient
C = 1270 Pink
MM = GIRL
FS = TULAX

D



K = 135 Clover
MB = 268 Emerald
PP = 035 Emerald
C = 0745 Lily pad
MM = TURF
FS = CHIVE

E



K = 1387 White
MB = 98 White Bleached
PP = 000 White
C = W1 White
MM = BWHT
FS = ARCTIC WHITE

F



K = 1161 Holly
MB = 371 Leprechaun
PP = 093 Android
C = 0726 Emerald
MM = SPEA
FS = PARSLEY

G



K = 481 Sangria
MB = 386 Pomegranate
PP = 073 Sangria
C = 1240 Hot Pink
MM = ORCH
FS = RAZZM

H



K = 1066 Cerise
MB = 217 Boysenberry
PP = 030 Bordeaux
C = 1200 Berry Stain
MM = POME
FS = Merlot