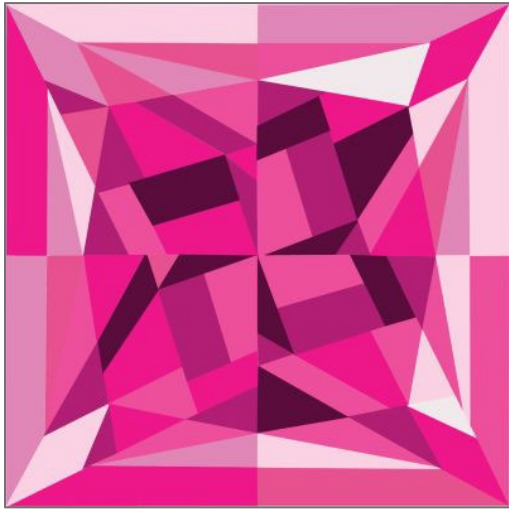


# COLORWAY SUGGESTIONS: "DAISY'S WICKED PINK DIAMOND"

## WICKED PINK DIAMOND



A



K – 143 Petal  
MB – 248 Parfait Pink  
PP – 018 Petal

B



K – 485 Ballerina  
MB – 166 Amelia Pink  
PP – 120 Petunia

C



K – 1383 Violet  
MB – 388 Lotus  
PP – 024 Orchid

D



K – 1036 Blush Pink  
MB – 212 Petal Pink  
PP – 147 Hot Pink

E



K – 1062 Candy Pink  
MB – 190 Fuchsia  
PP – 078 Bubblegum

F



K – 1049 Bright Pink  
MB – 223 Shocking Pink  
PP – 068 Rosebud

G



K – 473 Geranium  
MB – 412 Cyclamen  
PP – 028 Fuchsia

H



K – 1016 Berry  
MB – 302 Iris  
PP – 151 Grape

### KEY:

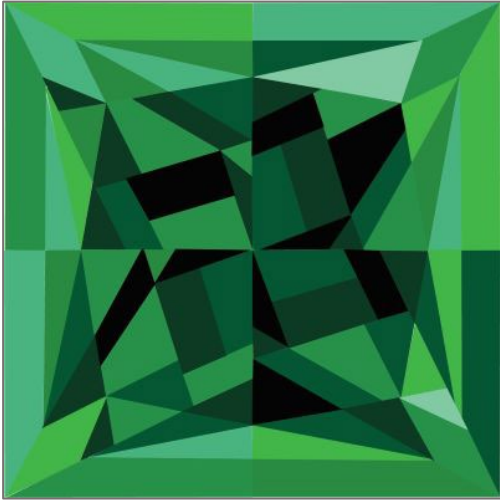
K = Kona Cotton Solids








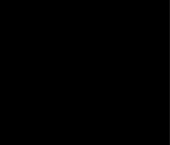
MB = Moda Bella Solids

PP = Painter's Palette by  
Paintbrush Studio Fabrics

# COLORWAY SUGGESTIONS: "DAISY'S WICKED PINK DIAMOND"

## EMERALD



A		K – 837 Aruba MB – 65 Green PP – 095 Beryl
B		K – 144 Sour Apple MB – 415 Parakeet PP – 164 Jolly
C		K – 1061 Candy Green MB – 304 Spearmint PP – 039 Jade
D		K – 135 Clover MB – 371 Leprechaun PP – 035 Emerald
E		K – 1388 Willow MB – 14 Christmas Green PP – 093 Android
F		K – 1141 Fern MB – 268 Emerald PP – 165 Paradise
G		K – 1185 Kelly MB – 399 Juniper PP – 074 Forest
H		K – 1019 Black MB – 96 Super Black PP – 004 Ebony

### KEY:

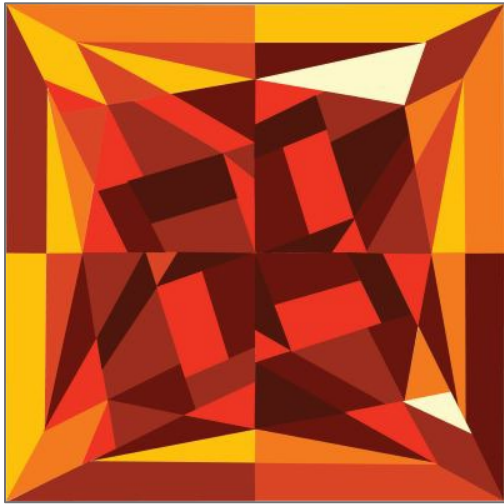
K = Kona Cotton Solids

MB = Moda Bella Solids

PP = Painter's Palette by  
Paintbrush Studio Fabrics

COLORWAY SUGGESTIONS: "DAISY'S WICKED PINK DIAMOND"

GOLDEN TOPAZ



A



K – 1229 Meringue  
MB – 31 Baby Yellow  
PP – 017 Honeycomb

B



K – 84 Persimmon  
MB – 80 Orange  
PP – 123 Amber

C



K – 840 Duckling  
MB – 291 Chrome  
PP – 003 Pencil Yellow

D



K – 865 Pimento  
MB – 256 Cayenne  
PP – 134 Tomato

E



K – 355 Cayenne  
MB – 424 Cinnamon  
PP – 128 Maroon

F



K – 1332 Sienna  
MB – 423 Sumac  
PP – 167 Scarlet

G



K – 323 Flame  
MB – 222 Mango  
PP – 057 Burnt Orange

H



K – 1215 Mahogany  
MB – 279 Merlot  
PP – 170 Java

KEY:

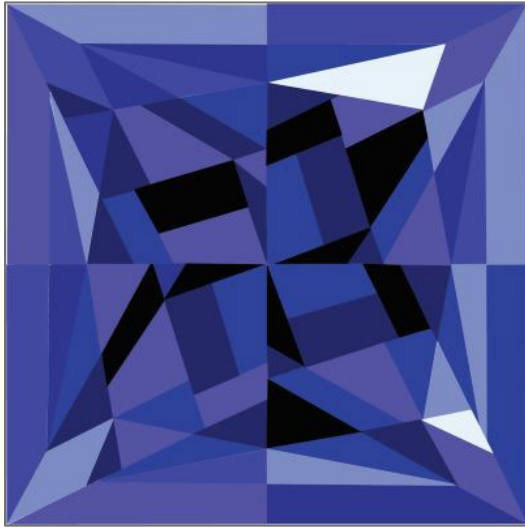
K = Kona Cotton Solids


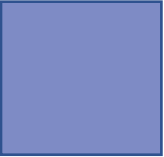






MB = Moda Bella Solids

PP = Painter's Palette by  
Paintbrush Studio Fabrics

COLORWAY SUGGESTIONS: "DAISY'S WICKED PINK DIAMOND"

Tanzanite



- |   |  |  |
|---|--|--|
| A |    | K – 152 Cloud<br>MB – 63 Lt Blue<br>PP – 020 Sky             |
| B |    | K – 27 Cornflower<br>MB – 25 30s Blue<br>PP – 037 Daydream   |
| C |    | K – 1285 Periwinkle<br>MB – 260 Periwinkle<br>PP – 025 River |
| D |   | K – 1084 Copen<br>MB – 116 Dusk<br>PP – 157 Danube           |
| E |  | K – 848 Blueprint<br>MB – 395 Azure<br>PP – 131 French Blue  |
| F |  | K – 357 Lapis<br>MB – 227 Cobalt<br>PP – 027 Purple          |
| G |  | K – 1218 Marine<br>MB – 19 Royal<br>PP – 008 Royal           |
| H |  | K – 1019 Black<br>MB – 96 Super Black<br>PP – 004 Ebony      |

KEY:

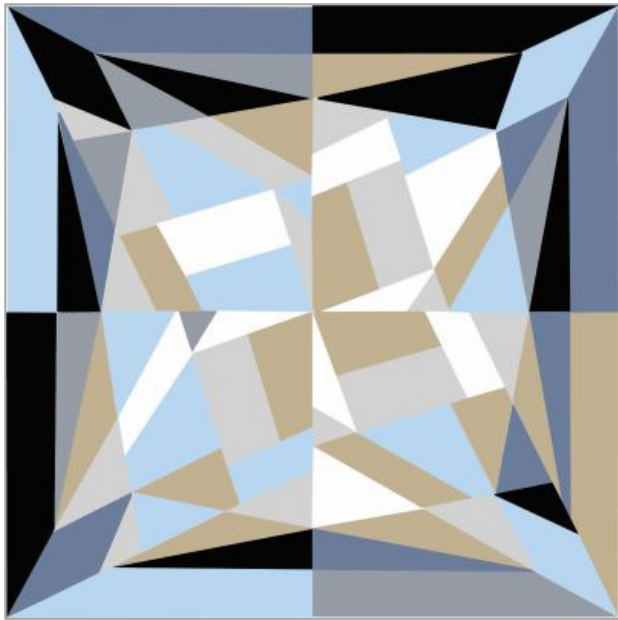
K = Kona Cotton Solids

MB = Moda Bella Solids

PP = Painter's Palette by  
Paintbrush Studio Fabrics

# COLORWAY SUGGESTIONS: "DAISY'S WICKED PINK DIAMOND"

## WHITE DIAMOND



### KEY:

K = Kona Cotton Solids

MB = Moda Bella Solids

PP = Painter's Palette by  
Paintbrush Studio Fabrics

A



K – 1019 Black  
MB – 96 Super Black  
PP – 004 Ebony

B



K – 1223 Med. Grey  
MB – 184 Steel  
PP – 036 Colonial Blue

C



K – 1019 Black  
MB – 96 Super Black  
PP – 004 Ebony

D



K – 854 Overcast  
MB – 201 Sand  
PP – 144 Sand Dollar

E



K – 413 Parchmet  
MB – 201 Sand  
PP – 144 Sand Dollar

F



K – 847 Spa Blue  
MB – 32 Baby Blue  
PP – 103 Cracked Ice

G



K – 856 Quicksilver  
MB – 185S Zen Grey  
PP – 016 Pale Silver

H



K – 1387 White  
MB – 200S Off White  
PP – 000 White