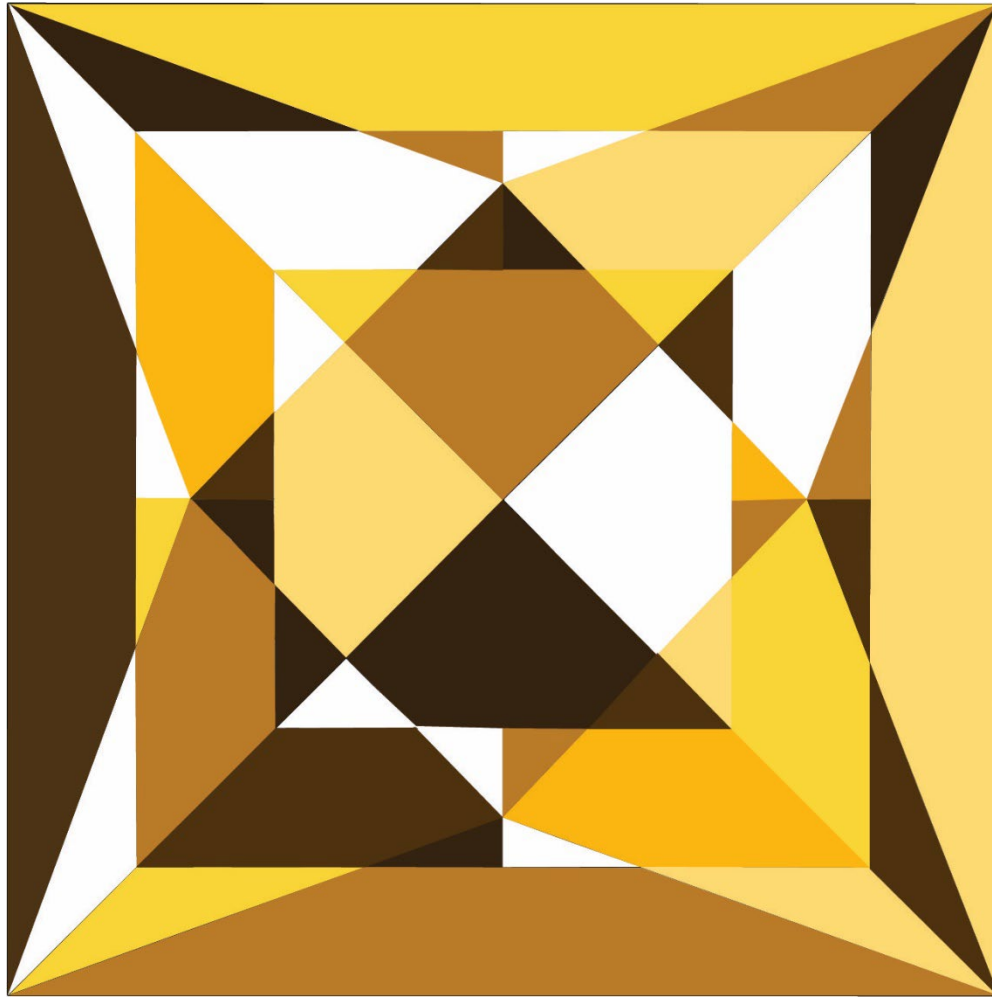
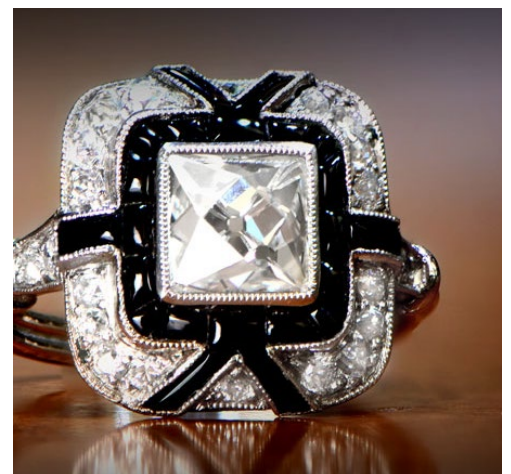


THE DUKE DIAMOND: DIAMOND & DRAMA QUEENS 18" PATTERN



Our Diamonds & Drama Queens pattern is inspired by this antique French-cut diamond, similar to the one likely purchased in 1947 by Porfiro "Rubi" Rubirosa to his new bride, Doris.

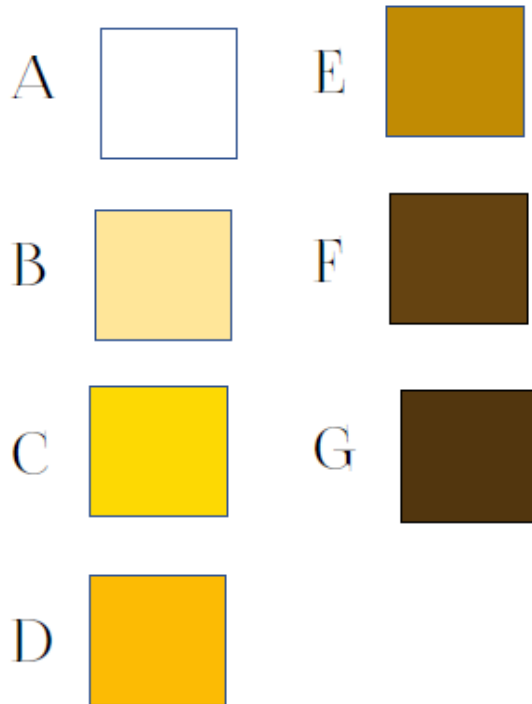
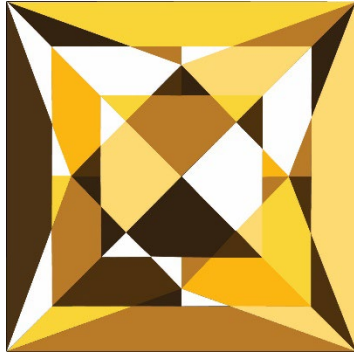
Doris Duke lived in luxury all her life. However, when her elderly father and tobacco magnate Buck Duke died in 1925, she became the richest 12-year-old in the world. Doris lived life on her own terms. She sought to preserve her father's legacy, create her own career, manage multiple love affairs and marriages, and give generously to causes that mattered to her. Yet she remained an enigma, aloof and aloft from those who wished to own her.



The French-cut faceting pattern evolved from the table-cut faceting pattern, one of the very first faceting patterns for diamonds. The French-cut regained popularity in the 1920's in response to a need for a simply, yet spectacular, faceting pattern for small stones.

THE DUKE DIAMOND: DIAMOND & DRAMA QUEENS 18" PATTERN

Color Codes & Color Suggestions



Supplies

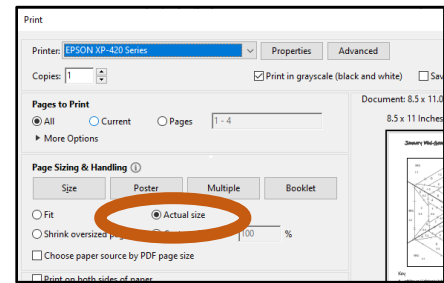
- Freezer paper (6 sheets, 8½" x 11")
- 2 Highlighter pens in different colors
- Fabric marking chalk or pen
- 18" or 24" ruler with a ¼" measurement
- Small ruler (12") with a ¼" measurement
- 7 envelopes or plastic baggies to store your facets
- Domestic sewing machine and thread assortment (neutrals or colors that match your fabrics)
- Scissors and rotary cutting tools (cutters and mat) – We'll be cutting both paper and fabric, so if you prefer to use 2 rotary cutters (one with an old blade and one new one) that would be ideal.
- Iron and ironing pad (or board)
- Pins, clips, or fabric glue
- 7 fabrics to correspond with 7 codes
- 7 Fabrics according to the colorway chart

THE DUKE DIAMOND: DIAMOND & DRAMA QUEENS 18" PATTERN

Instructions

Preparation

1. Print pages 9-14 of this document with the “Actual Size” print option selected onto a piece of 8.5” x 11” freezer paper. Printing “Actual Size” will ensure that your segments will print out so that your block will be exactly 18” square. This is the chart you will cut up.



2. Print pages 9-14 of this document onto regular paper using the “Actual Size” setting. This will be the copy you will pin or tape to your quilt room wall. It will be your KEY to help you put your block back together.
3. Identify 7 fabrics in a range of values to use in your block. Attach a snippet of fabric next to each code of the corresponding value (i.e., light, medium, dark) OR label your fabric by writing the code on the selvedge edge or corner of the corresponding fabric.
4. Gather 7 business size envelopes or plastic baggies in which you’ll store your facets once cut apart. Label them with the letters A, B, C, D, E, F and G to correspond to your fabric codes.
5. Fabric prep: If your fabric seems to be slightly stiff with sizing OR has many different colors in it, you may want to pre-wash your fabric. Sizing and layers of dye sometimes prevents freezer paper from sticking to the fabric.

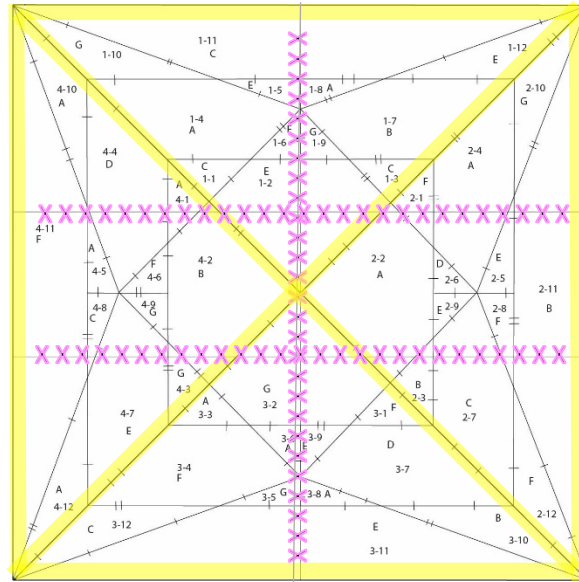
Cutting Your Facets

6. Cut out the individual sections, including the tabs. Lay one section over the tab of the adjoining section. Carefully run the tip of a hot iron over the overlapping area to join the sections.
7. Once your freezer paper pattern is assembled, use your highlighter pen to....
 - a. Highlight the inside edge of the block.
 - b. Highlight both sides of the lines that divide the sections.

These highlighter marks are your visual clues to consider placing the highlighted edges on the grain lines when you’re ironing on the facets to the fabric. (Remember: place either the highlighted edge on the straight of grain OR the longest edge. This is your decision to make.)

THE DUKE DIAMOND: DIAMOND & DRAMA QUEENS 18" PATTERN

- Use your second highlighter to mark the horizontal and vertical join lines with X's. This is your visual clue to NOT cut apart the facets on these lines. Your chart may look like this:



- With a ruler and rotary cutter, cut apart the freezer paper template and sort facets into the envelopes or baggies by letter code. Be sure NOT to cut apart facets on the horizontal and vertical join lines (marked with the X's).

TIP: If your ruler slips off the line a little bit, no problem! **Just don't trim it up.** Just be sure that you can still see any hashmarks on either side of the cut.

- Arrange facets on the RIGHT SIDE of the fabric that corresponds to their color code, allowing $\frac{3}{4}$ " of space between each facet. Determine which edge of each piece to place on the straight of grain: either the highlighted edge OR the longest edge, whichever you think will need more stability. Press with a hot iron, no steam.

TIP: If the freezer paper isn't adhering very well to the fabric, try heating the fabric first and then laying the freezer paper piece on top of it and press it down.

- Once all your facets are ironed to the RIGHT SIDE of the fabric, relabel 4 of your envelopes or baggies with the numbers 1 through 4, corresponding to the 4 sections of the block.

THE DUKE DIAMOND:

DIAMOND & DRAMA QUEENS 18" PATTERN

12. Using a rotary cutter and small ruler, cut out each facet with a 1/4" seam allowance. Take care to make these 1/4" seam allowances as accurate and consistent as possible. Place the fabric facets in your envelopes or baggies by section number (i.e., 1 through 4).
13. Once all your facets are cut out and stored in their respective envelopes, remove the facets from the envelopes one by one and lay them out in numerical order to make sure that one hasn't accidentally wandered away.

Piecing Your Gem

14. Arrange facets into their piecing order using the chart you put up on your quilt room wall as your guide.

TIP: I have created a "Piece Plan" that provides a step-by-step process to assemble the block. You'll find it starting on page 7.

15. To piece your facets, place RIGHT SIDES together (freezer paper will be inside the fabric sandwich).
16. Peek inside the seam allowance and line up the hash marks on each side of the two pieces. Ensure that the corners of each facet line up together.
17. Pin carefully along the seam OR use a clip OR use a glue product to secure the 2 pieces together.
18. Identify the 1/4" seam guide on your machine's plate.
19. Position the pair of pinned facets under the presser foot so that the edge of your fabric sandwich is just a needle-width to the left of the 1/4" seam guide. This will prevent you from sewing into the freezer paper on the inside.
20. Stitch the seam line using a regular stitch length (i.e., 2.5).
21. Open the facets with both seams to one side. (Press to the darkest side OR the side that has the fewest intersecting seams.)

THE DUKE DIAMOND:

DIAMOND & DRAMA QUEENS 18" PATTERN

TIP: If there is a gap between the edges of your freezer paper, you can either resew a little bit closer to the ¼" seam guide OR you can pick up one of the templates and iron it next to the seam. Just be sure to trim the seam allowance down to ¼".

TIP: If you have sewn into the freezer paper, give the two pieces a little tug to see if this frees the freezer paper. If you've really munched the freezer paper, consider ripping that section and resewing. Gaps and tucks change the position of the hashmarks along the sides of the 2 facets, which makes it a bit confusing when trying to match it up to its adjoining unit. In the end, though, perfection is NOT a priority and, once you've removed all the paper from your gem, no one will know the difference!

22. Continue to stitch the facets together, retaining the freezer paper on the front of each piece. If facets come loose, simply iron back on.

TIP: If you want to remove the freezer paper after piecing major sections together, be sure to draw the hash marks onto the seam allowance **before removing the freezer paper.**

23. Once the gem is complete, remove the remaining freezer paper pieces and store them in your envelopes or baggies by color code if you plan to use them again. (Typically, you can get another use out of the freezer paper.)

24. If little bits of freezer paper are stuck in the seam line, use a pair of tweezers to remove. If they are stubborn, try using seam ripper to remove them by pushing the bit of paper from the front to the back side of the fabric. Use tweezers to pull from between the seams.

CONGRATULATIONS!

PIECE PLAN FOR "THE DUKE DIAMOND"

Section 1

- Sew together 1-1, 1-2 and 1-3 (to create Unit 1:3)
- Sew together 1-4, 1-5 and 1-6 (to create Unit 4:6)
- Sew together 1-7, 1-8 and 1-9 (to create Unit 7:9)
- Sew together Unit 4:6 and Unit 7:9 (to create Unit 4:9)
- Sew together 1-10, 1-11 and 1-12 (to create Unit 10:12)
- Sew together Unit 1:3, 4:9 and 10:12 (to complete Section 1)

Section 2

- Sew together 2-1, 2-2 and 2-3 (to create Unit 1:3)
- Sew together 2-4, 2-5 and 2-6 (to create Unit 4:6)
- Sew together 2-7, 2-8 and 2-9 (to create Unit 7:9)
- Sew together Unit 4:6 and Unit 7:9 (to create Unit 4:9)
- Sew together 2-10, 2-11 and 2-12 (to create Unit 10:12)
- Sew together Unit 1:3, 4:9 and 10:12 (to complete Section 2)

Section 3

- Sew together 3-1, 3-2 and 3-3 (to create Unit 1:3)
- Sew together 3-4, 3-5 and 3-6 (to create Unit 4:6)
- Sew together 3-7, 3-8 and 3-9 (to create Unit 7:9)
- Sew together Unit 4:6 and Unit 7:9 (to create Unit 4:9)
- Sew together 3-10, 3-11 and 3-12 (to create Unit 10:12)
- Sew together Unit 1:3, 4:9 and 10:12 (to complete Section 3)

Section 4

- Sew together 4-1, 4-2 and 4-3 (to create Unit 1:3)
- Sew together 4-4, 4-5 and 4-6 (to create Unit 4:6)
- Sew together 4-7, 4-8 and 4-9 (to create Unit 7:9)
- Sew together Unit 4:6 and Unit 7:9 (to create Unit 4:9)
- Sew together 4-10, 4-11 and 4-12 (to create Unit 10:12)
- Sew together Unit 1:3, 4:9 and 10:12 (to complete Section 4)

(more on next page)

THE DUKE DIAMOND:
DIAMOND & DRAMA QUEENS 18" PATTERN

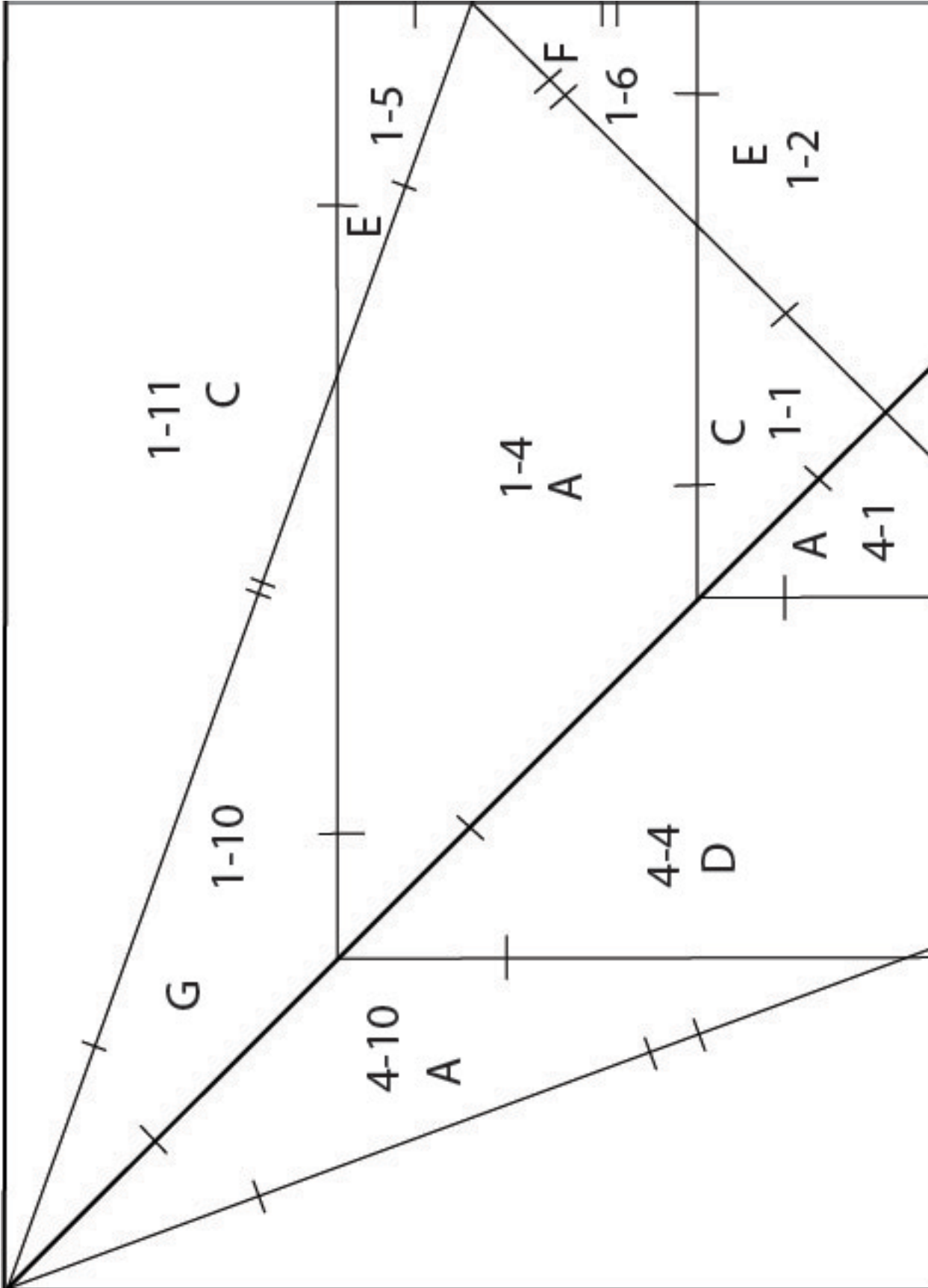
Putting Sections Together

- Sew together Section 1 and Section 2
- Sew together Section 3 and Section 4
- Sew the two halves of your block together

THE DUKE DIAMOND: DIAMOND & DRAMA QUEENS 18" PATTERN

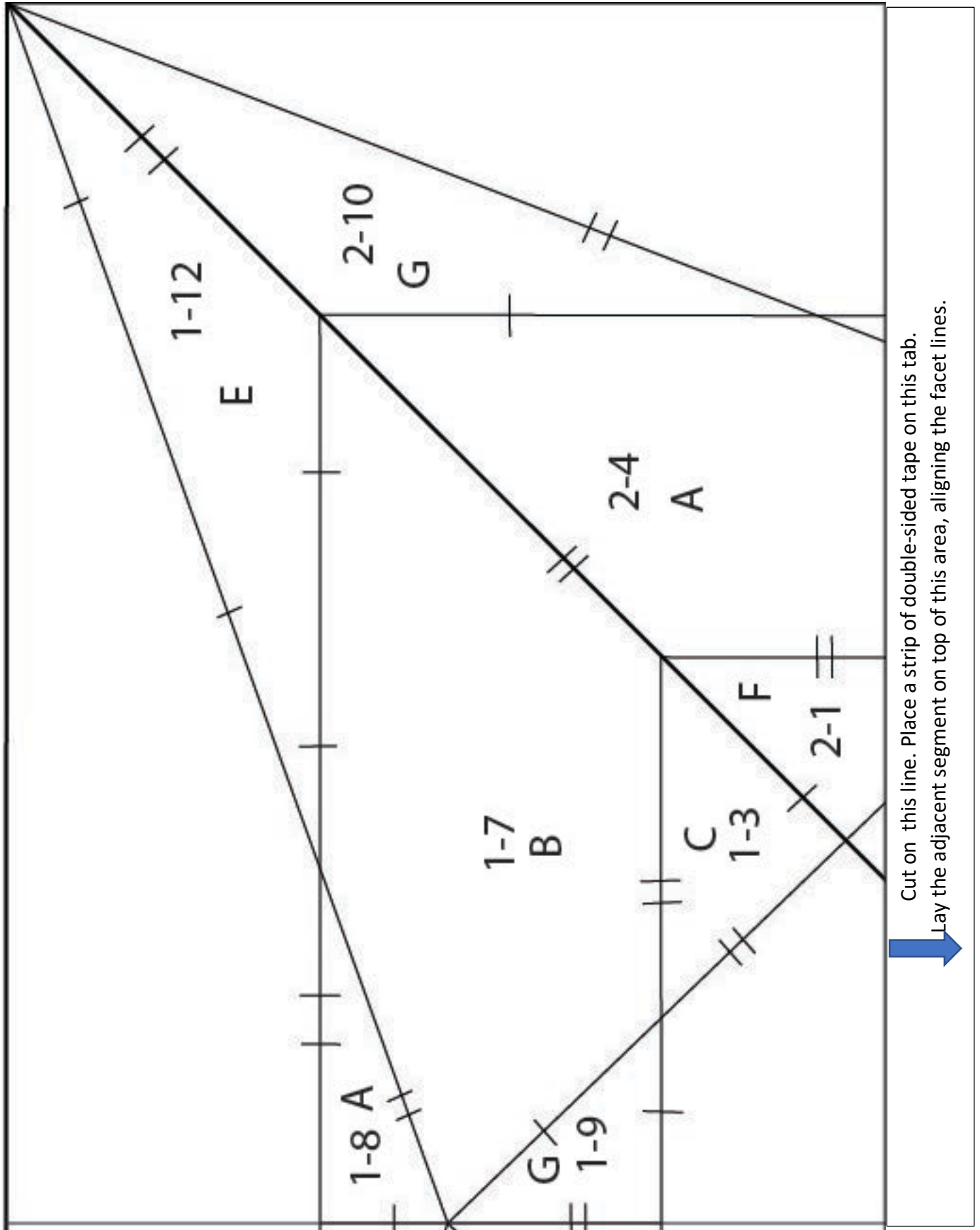


Cut on this line. Place a strip of double-sided tape on this tab.
Lay the adjacent segment on top of this area, aligning the facet lines.

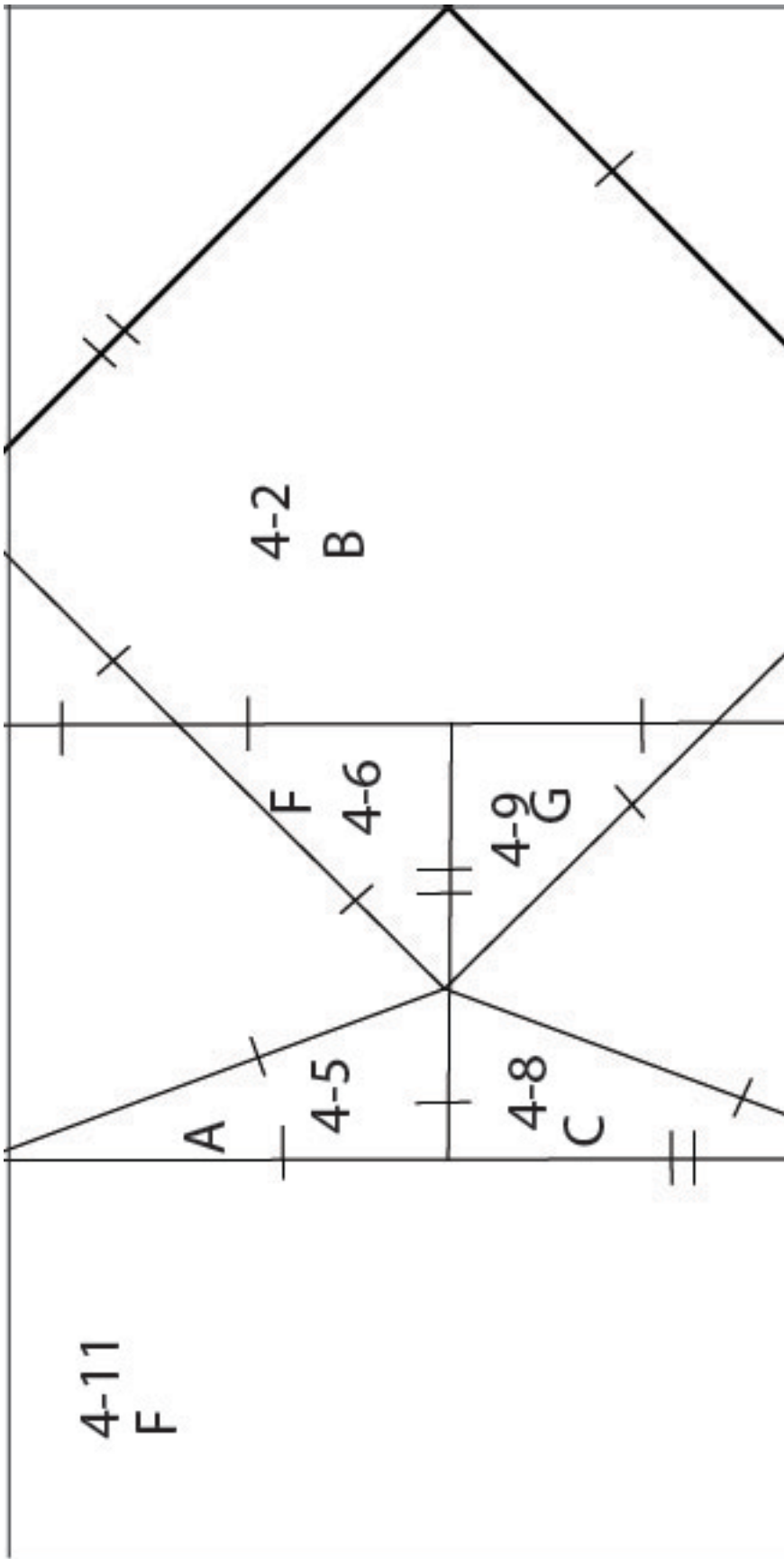


Cut on this line. Place a strip of double-sided tape on this tab.
Lay the adjacent segment on top of this area, aligning the facet lines.

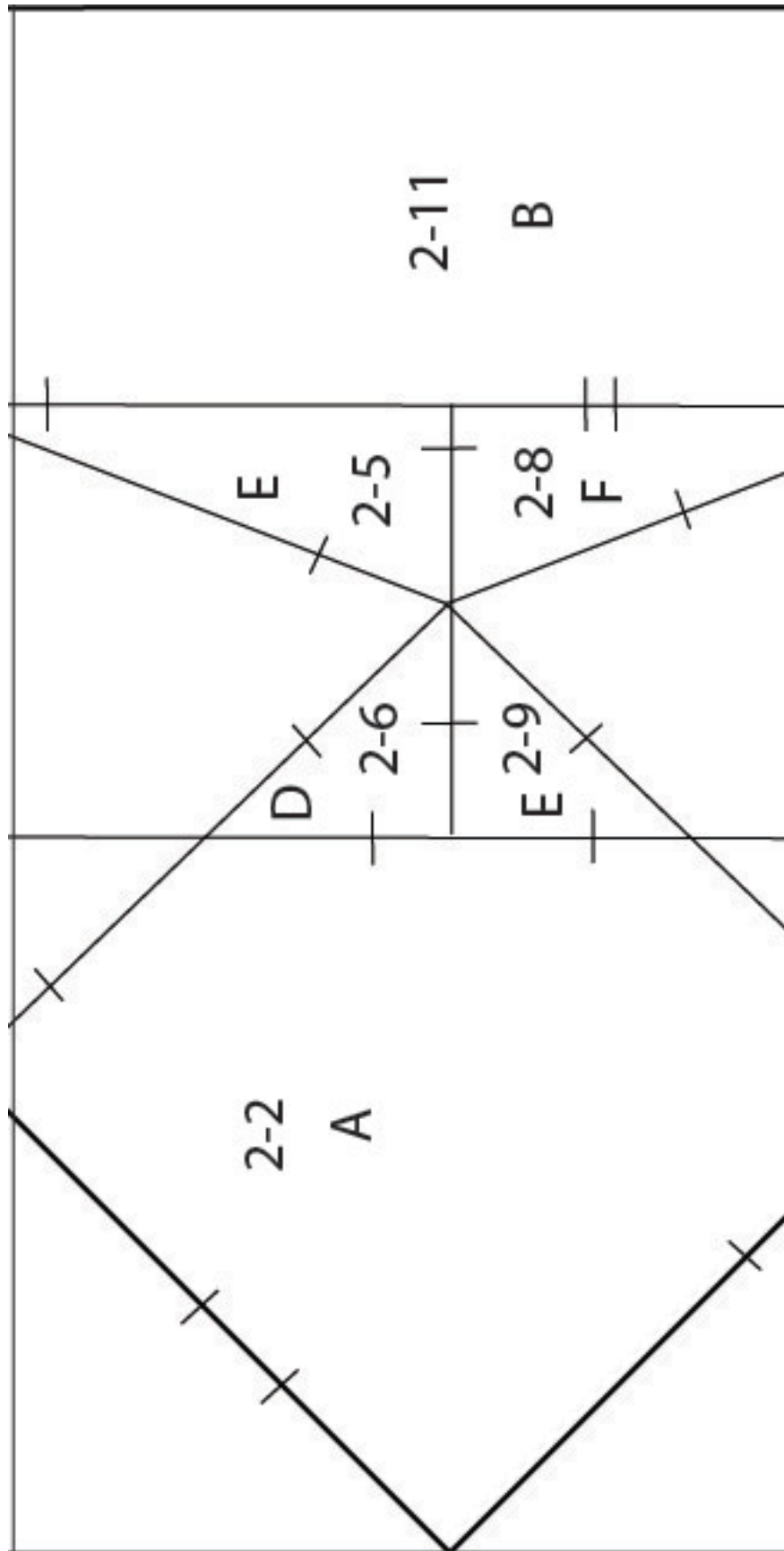
THE DUKE DIAMOND:
DIAMOND & DRAMA QUEENS 18" PATTERN



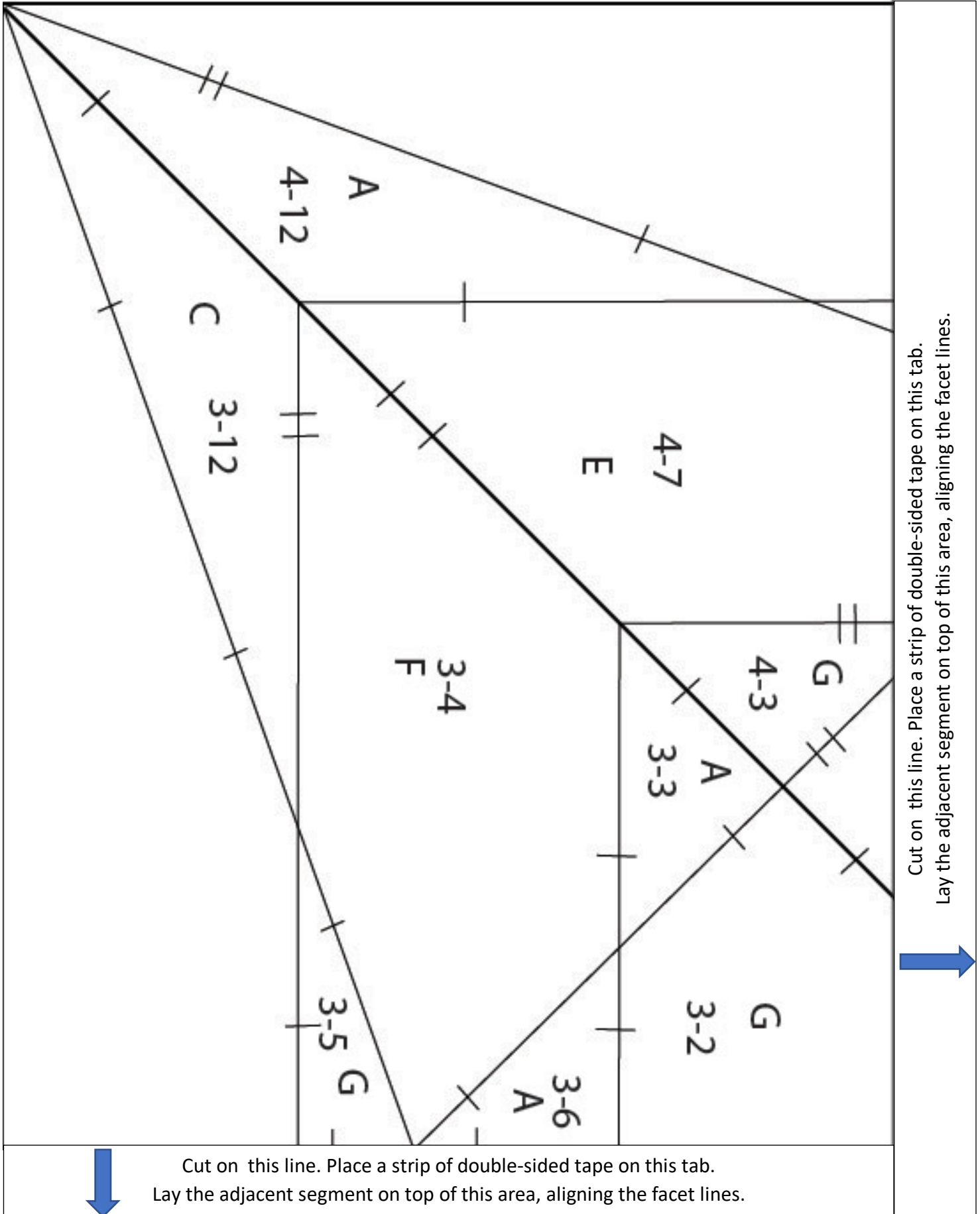
THE DUKE DIAMOND:
DIAMOND & DRAMA QUEENS 18" PATTERN



THE DUKE DIAMOND:
DIAMOND & DRAMA QUEENS 18" PATTERN



THE DUKE DIAMOND: DIAMOND & DRAMA QUEENS 18" PATTERN



THE DUKE DIAMOND:
DIAMOND & DRAMA QUEENS 18" PATTERN

