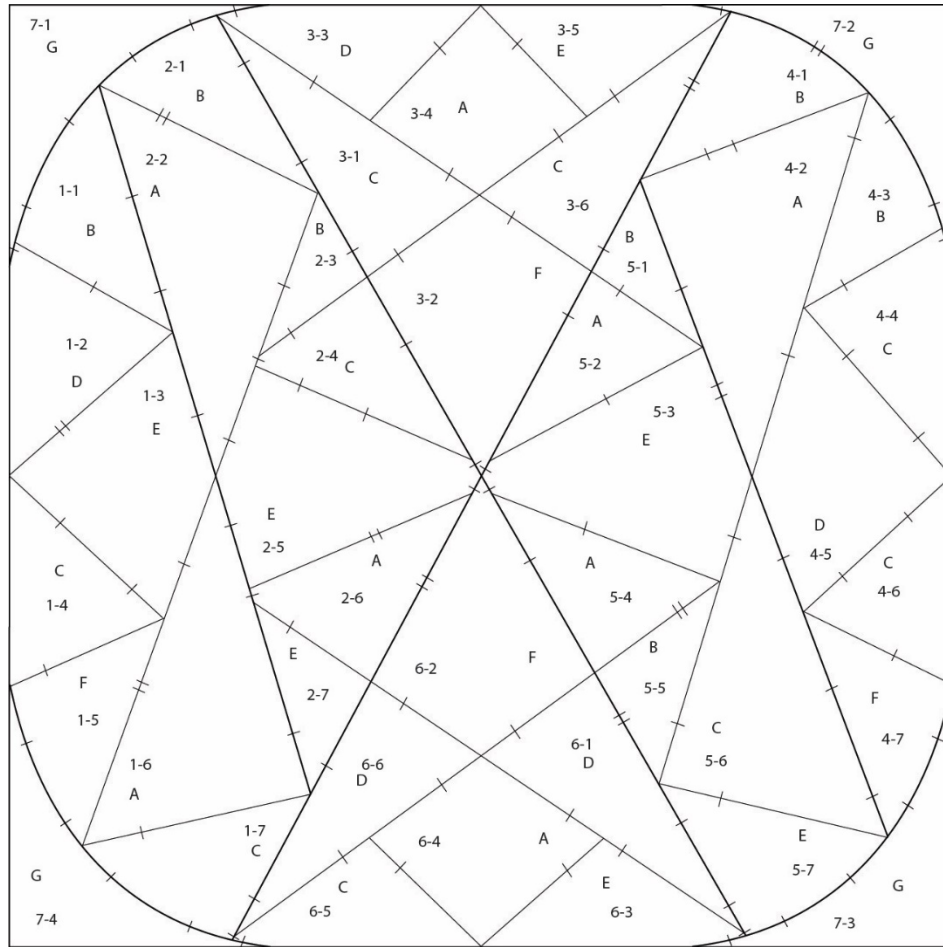


THE RED CROSS: DIAMOND & DRAMA QUEENS NOVEMBER 2021 (18" PATTERN)



Our *Diamonds & Drama Queens* pattern for November is inspired by the **Red Cross Diamond**, an enormous 205.07-carat, cushion-shaped, brilliant-cut canary diamond.

The Red Cross is the 4th largest yellow diamond in the world. It was auctioned by Christie's of London in 1918 to benefit the British Red Cross Society. It's name is also appropriate since the diamond displays a very clear cross pattern from the table view.

It's believed that a member of a European royal family bought the Red Cross that day in 1918, that it changed hands several times, and eventually came into the possession of an American businessman.

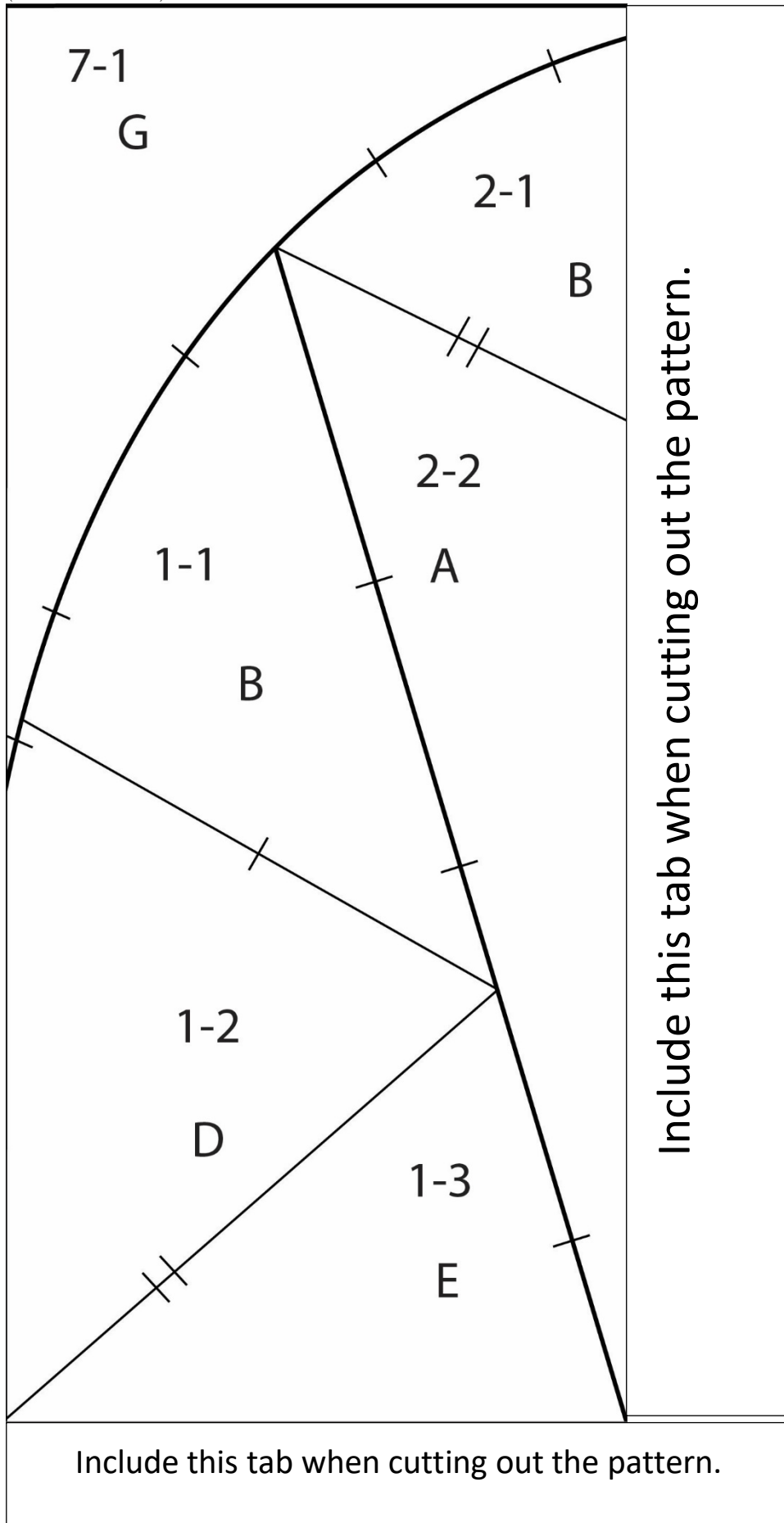


Here's where I'm going to put a twist on the story and introduce you to an astoundingly wealthy woman of the American Gilded Age who also became an icon for women's suffrage: Alva Vanderbilt. This woman owned scads of gemstones, one of which *could have been* similar to the Red Cross. Please know that I'm not suggesting that she actually owned it! I'm using this opportunity to introduce you to TWO "gems": the Red Cross Diamond and Alva Vanderbilt.

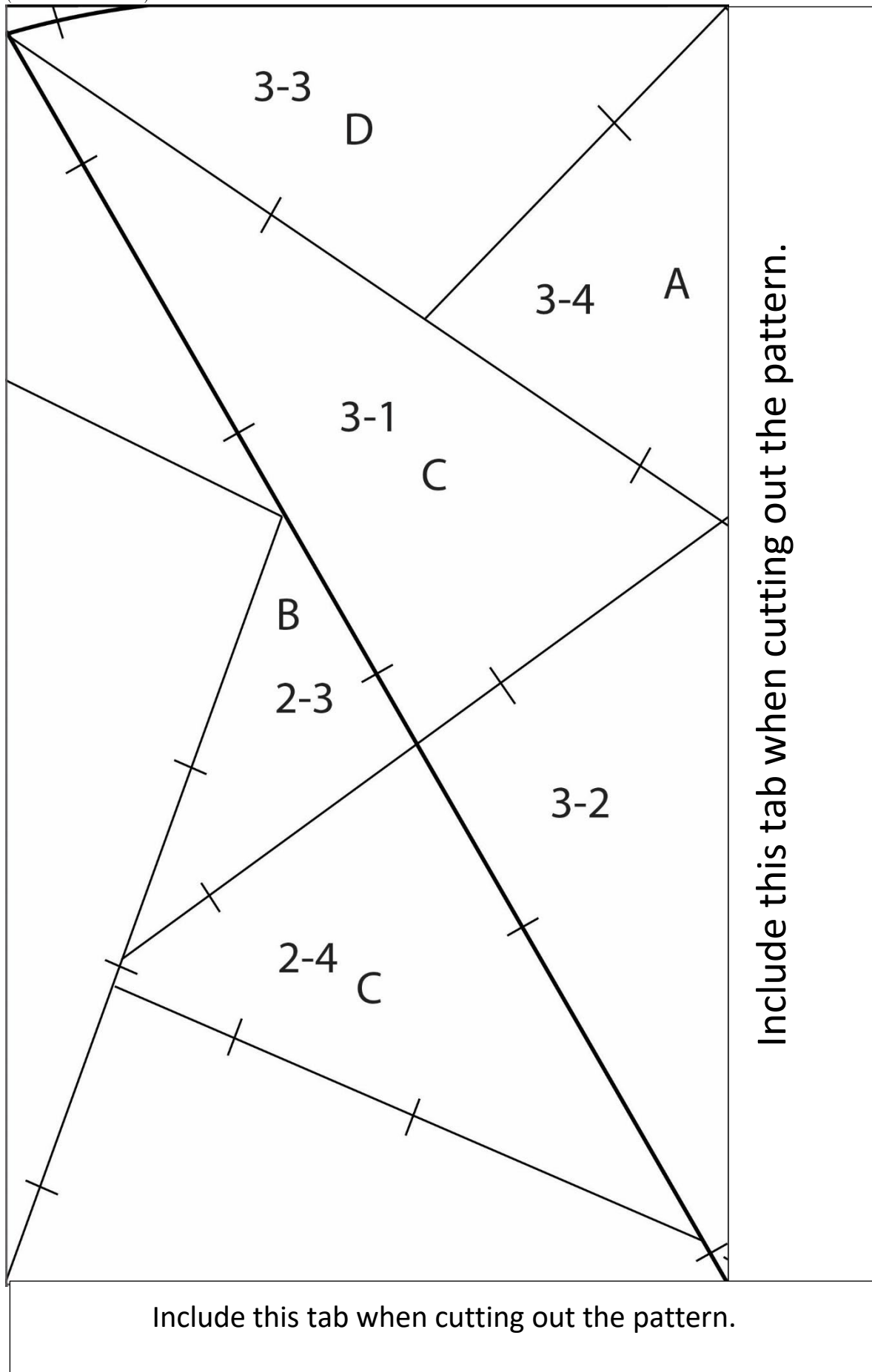
Enjoy!

THE RED CROSS: DIAMOND & DRAMA QUEENS NOVEMBER 2021

(18" PATTERN)

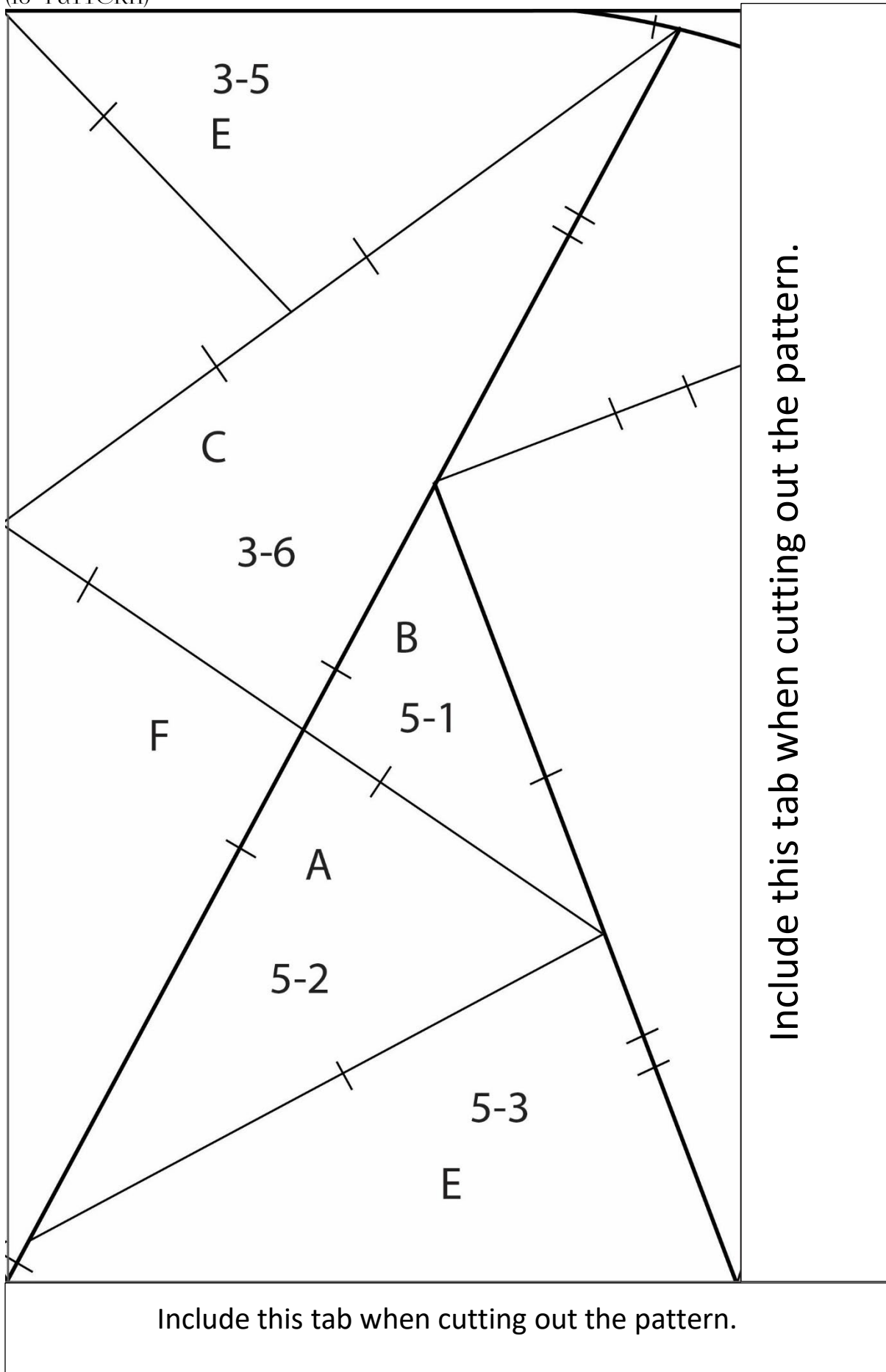


THE RED CROSS: DIAMOND & DRAMA QUEENS NOVEMBER 2021
(18" PATTERN)



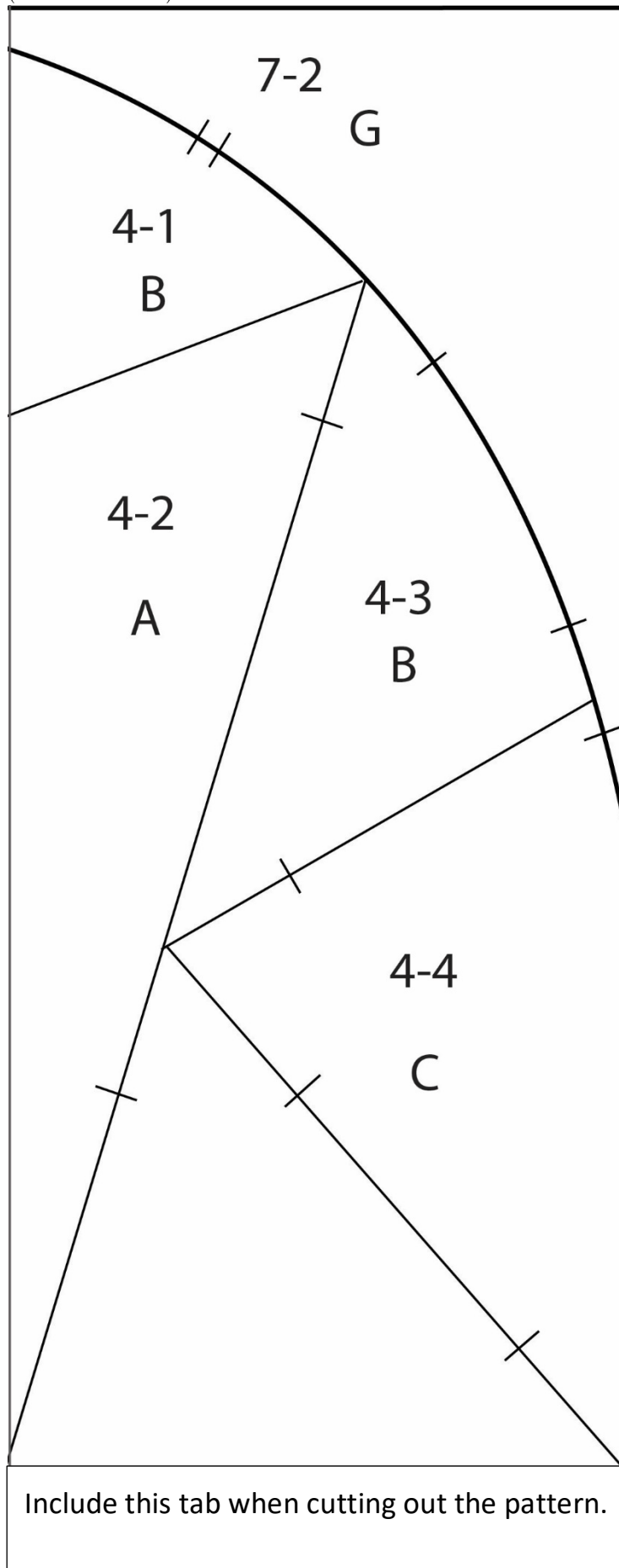
THE RED CROSS: DIAMOND & DRAMA QUEENS NOVEMBER 2021

(18" PATTERN)



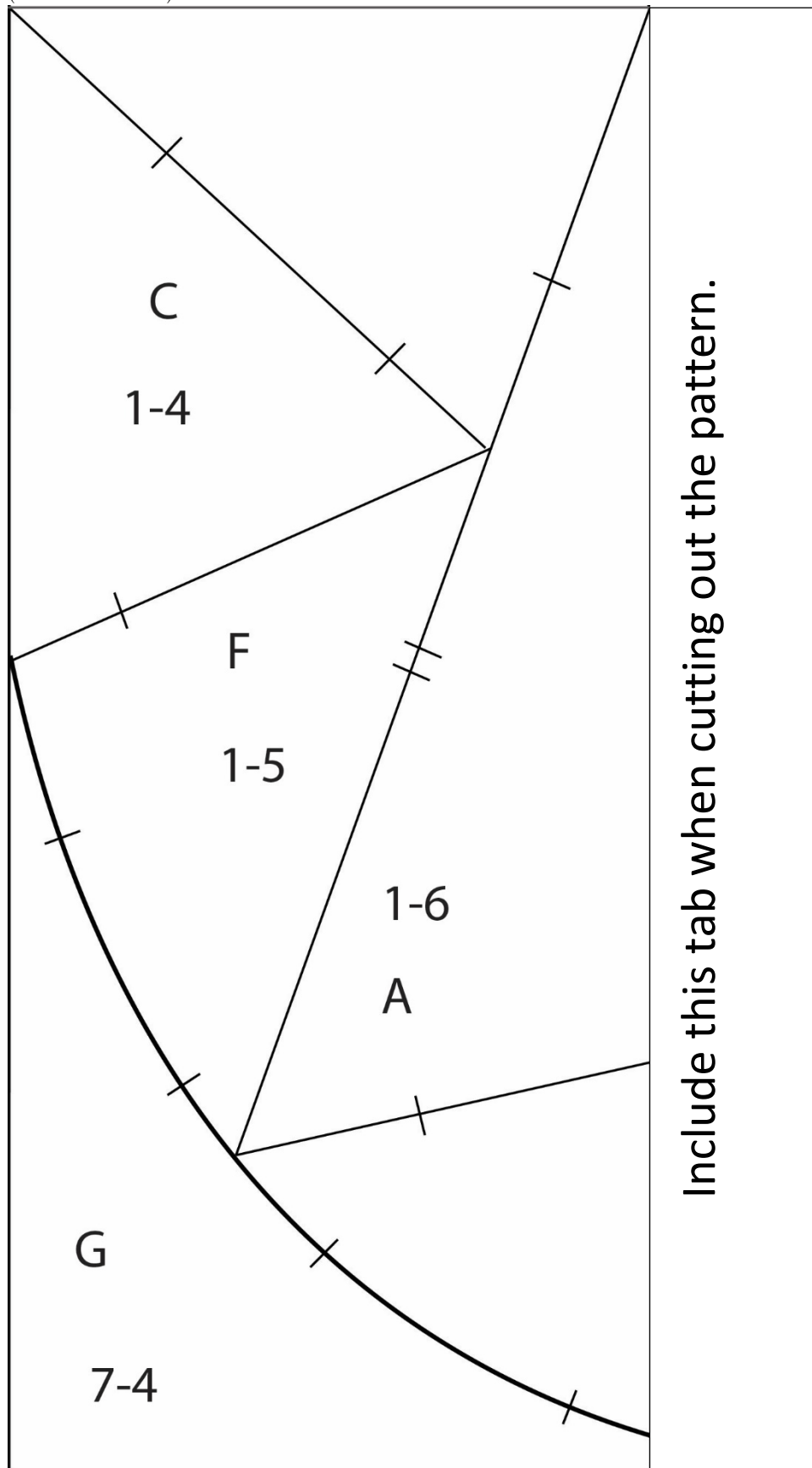
THE RED CROSS: DIAMOND & DRAMA QUEENS NOVEMBER 2021

(18" PATTERN)



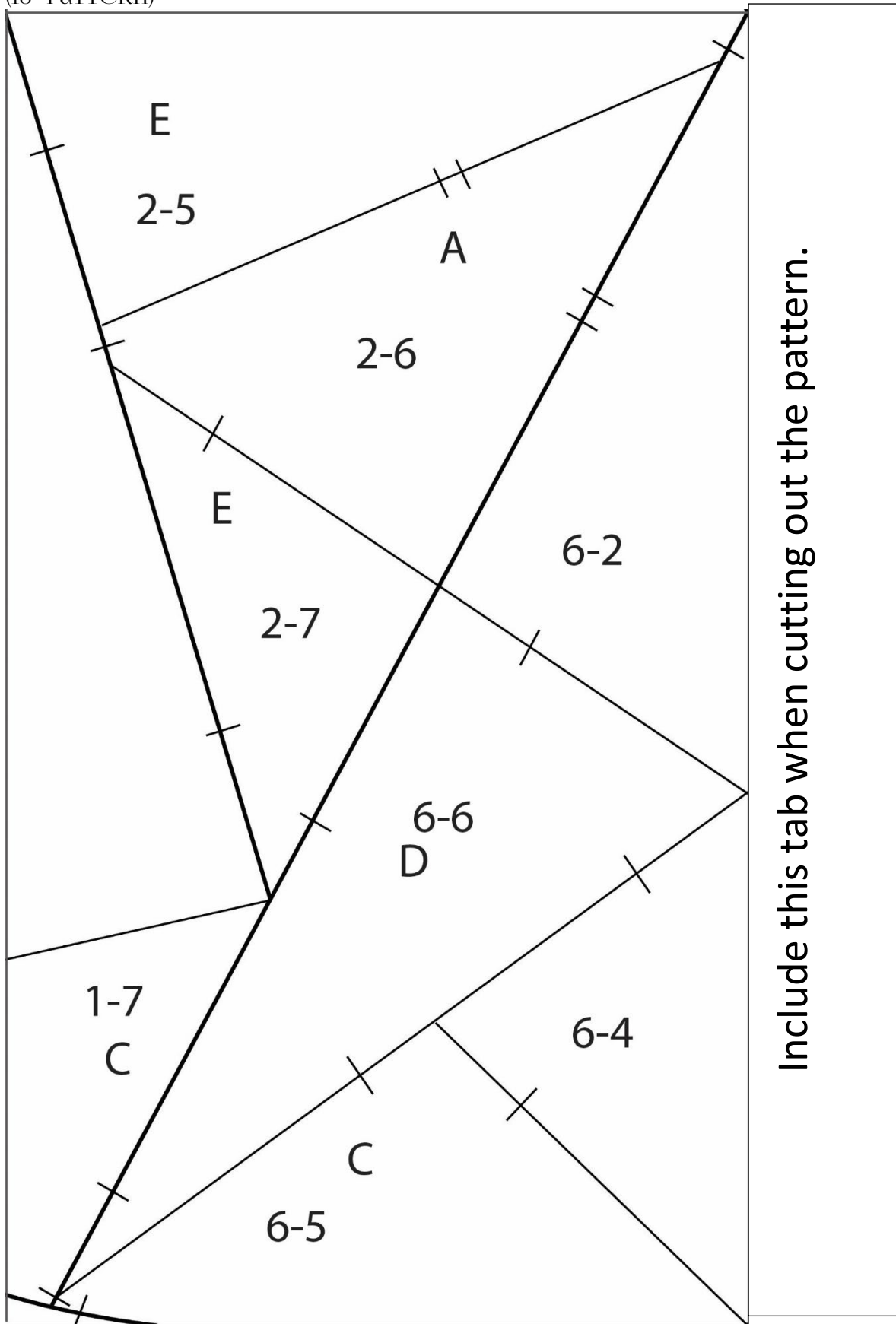
THE RED CROSS: DIAMOND & DRAMA QUEENS NOVEMBER 2021

(18" PATTERN)



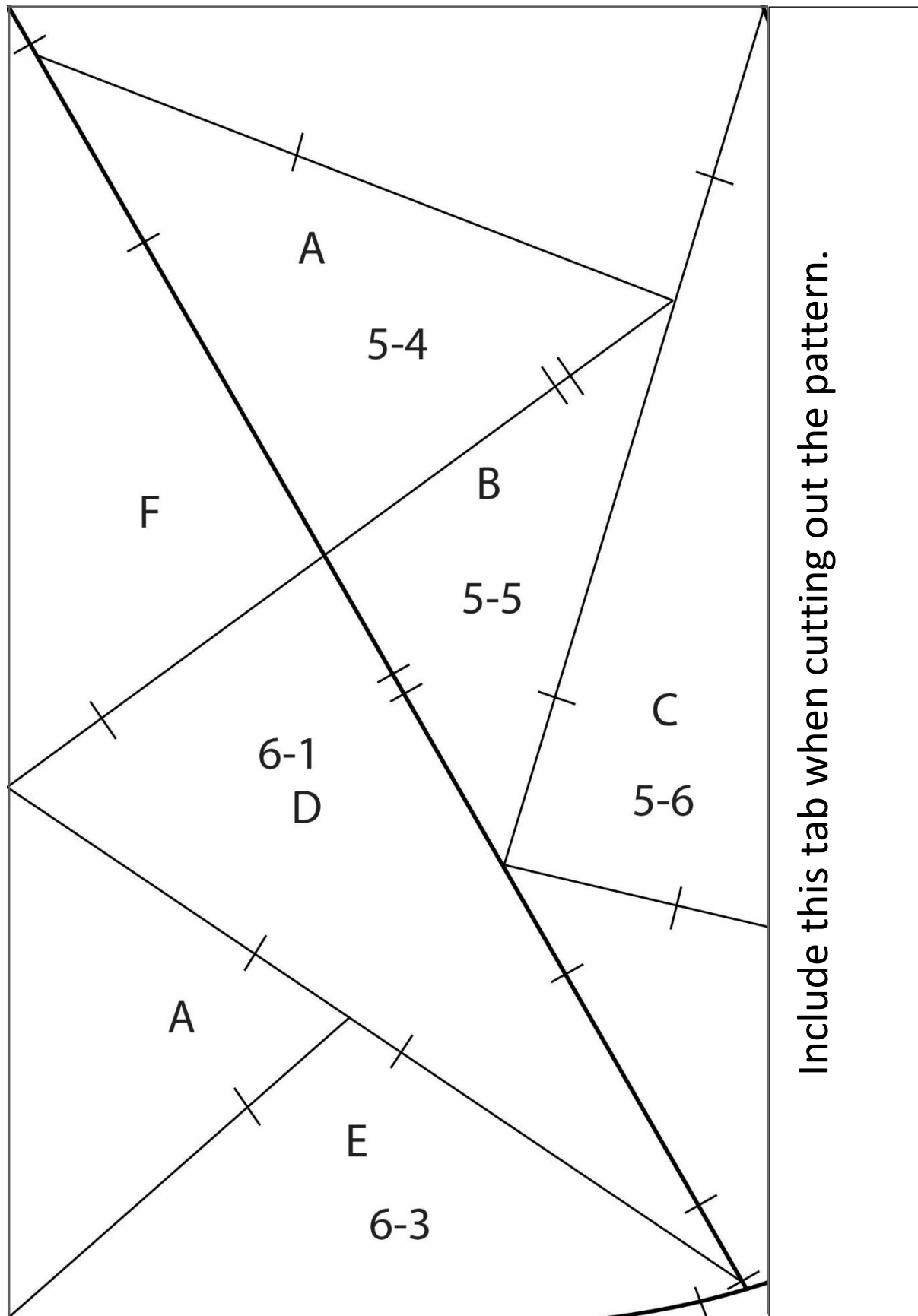
THE RED CROSS: DIAMOND & DRAMA QUEENS NOVEMBER 2021

(18" PATTERN)



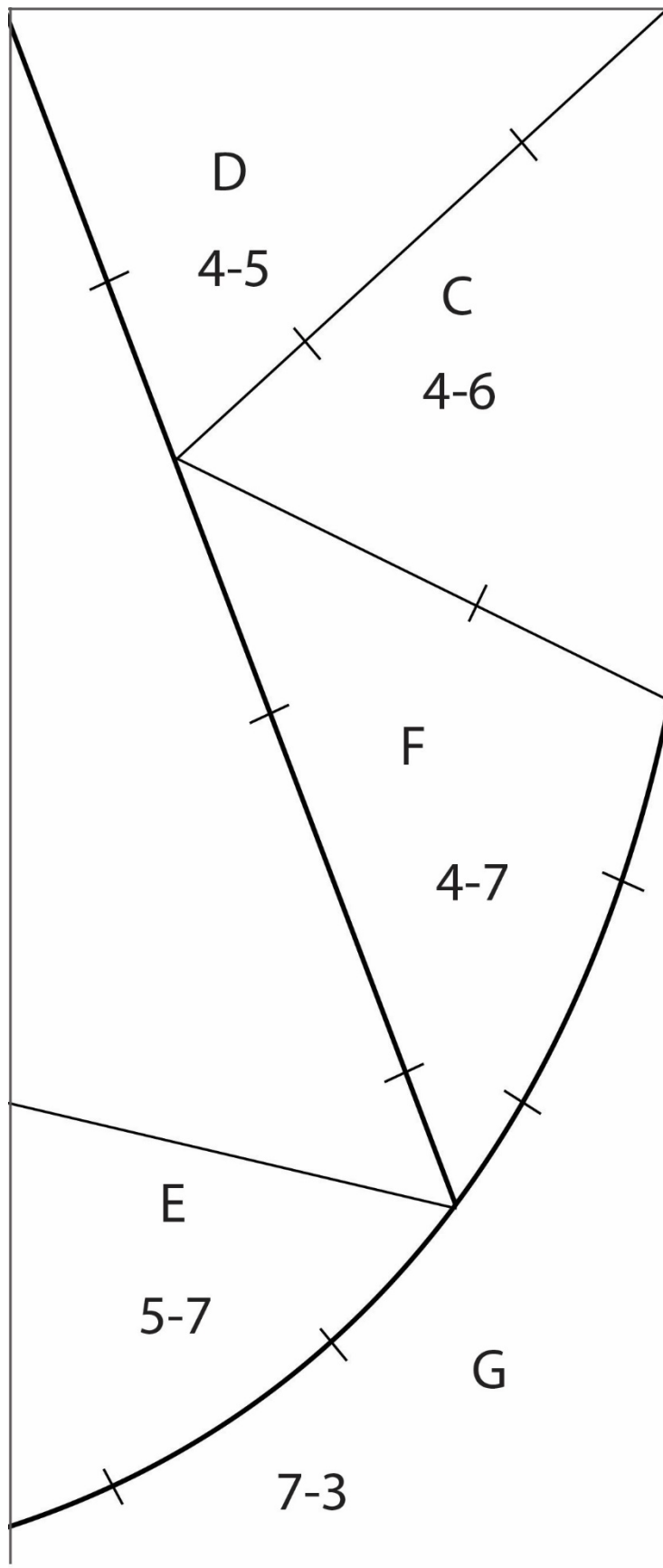
THE RED CROSS: DIAMOND & DRAMA QUEENS NOVEMBER 2021

(18" PATTERN)



THE RED CROSS: DIAMOND & DRAMA QUEENS NOVEMBER 2021

(18" PATTERN)



THE RED CROSS: DIAMOND & DRAMA QUEENS NOVEMBER 2021

(18" PATTERN)

COLORPLAY CHART

A - Lightest Light (or White)

E – Dark

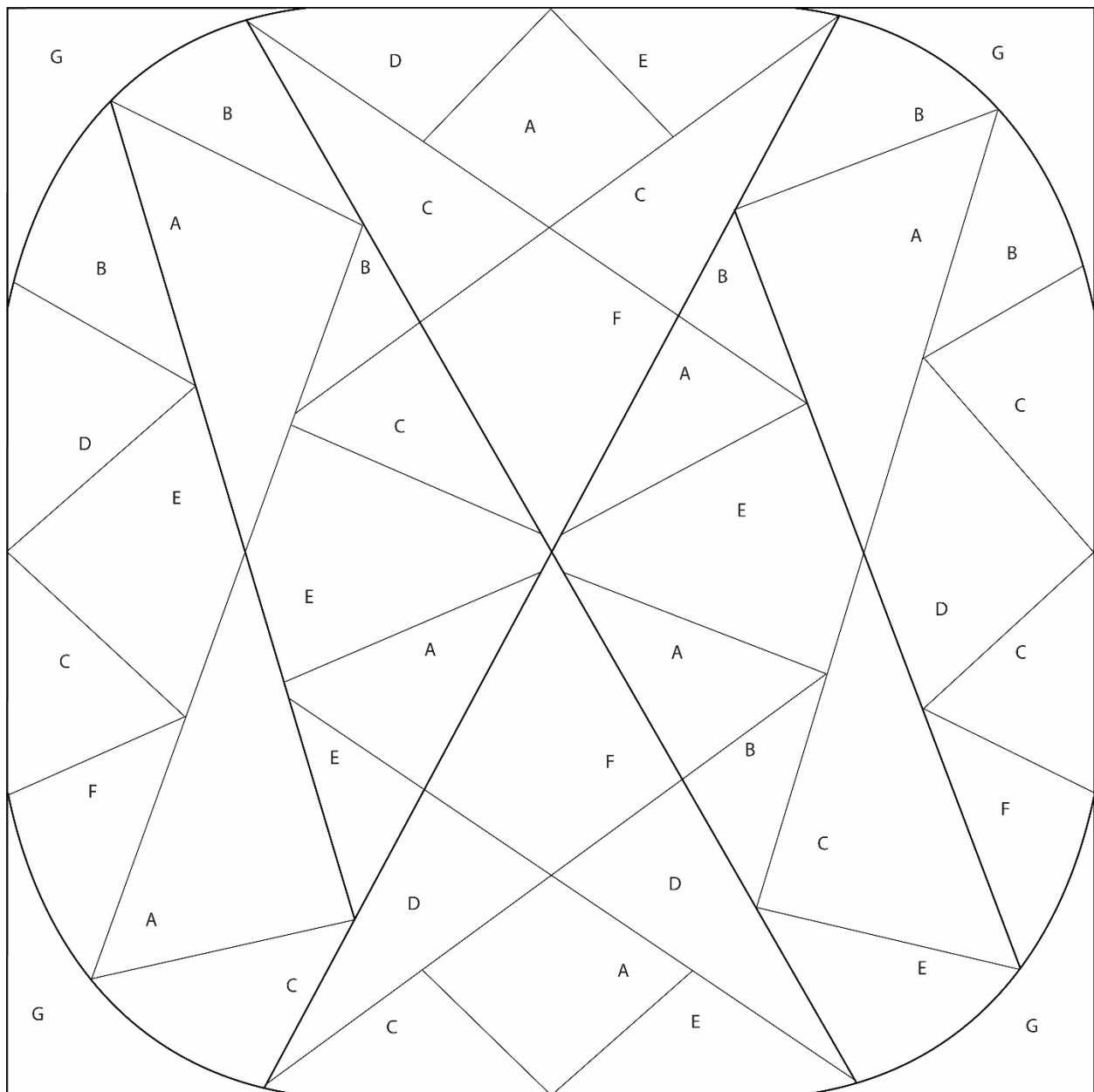
B – Light

F - Darkest Dark (or Black)

C –Medium-Light

G - Background

D – Medium-Dark



THE RED CROSS: DIAMOND & DRAMA QUEENS NOVEMBER 2021

(18" PATTERN)

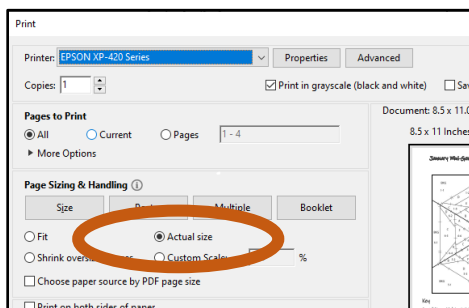
SUPPLIES

- Freezer paper – You can purchase a roll of freezer paper from the grocery store (Reynold's Freeze Paper). Be sure that you're not purchasing wax paper or parchment paper. Neither of these products will work with this project. You can also purchase pre-cut sheets that are commercially available. One product is Quilter's Freezer Paper by C&T Publishing, available on Amazon.com.
- 2 Highlighter pens in different colors
- Fabric marking chalk or pen
- 18" or 24" ruler with a 1/4" measurement
- Small ruler (12") with a 1/4" measurement
- 7 envelopes or plastic baggies to store your facets
- Domestic sewing machine and thread assortment (neutrals or colors that match your fabrics)
- Scissors and rotary cutting tools (cutters and mat) – We'll be cutting both paper and fabric, so if you prefer to use 2 rotary cutters (one with an old blade and one new one) that would be ideal.
- Iron and ironing pad (or board)
- Pins, clips, or fabric glue
- 7 Fabrics according to the colorway chart

INSTRUCTIONS

Preparation

1. Print pages 2-9 of this document with the "Actual Size" print option selected onto a piece of 8.5" x 11" freezer paper. Printing "Actual Size" will ensure that your segments will print out so that your block will be exactly 18" square. This is the chart you will cut up.



2. Print pages 2-9 of this document onto regular paper using the "Actual Size" setting. This will be the copy you will pin or tape to your quilt room wall. It will be your KEY to help you put your block back together.
3. Cut out the block sections and assemble them by overlapping the sections at the tabs. Run the tip of a hot iron over the overlapping areas to adhere the sections together into a whole block pattern.

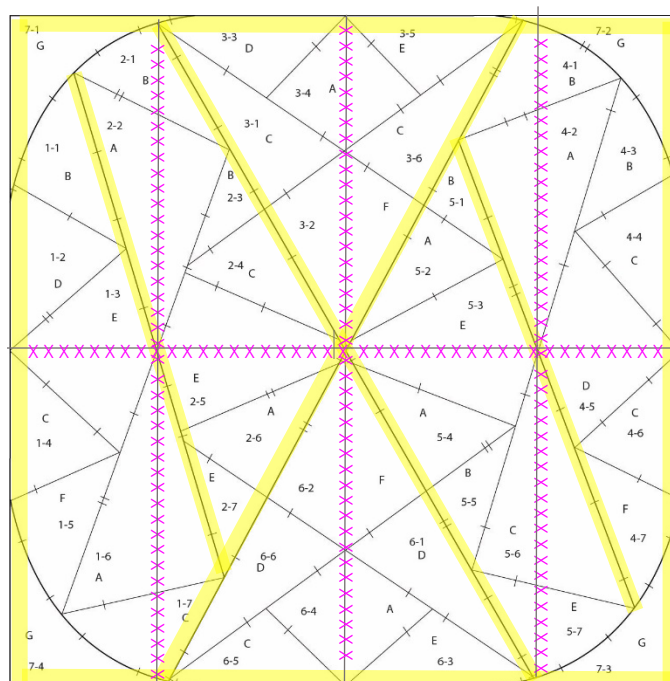
THE RED CROSS: DIAMOND & DRAMA QUEENS NOVEMBER 2021

(18" PATTERN)

4. Identify 7 fabrics in a range of values to use in your block. On page 10, you'll find a pattern with just the color codes in place. You can use this to experiment with colorways. I've also provided a Colorway diagram featuring the pattern in a variety of colors.
5. Attach a snippet of fabric next to each code of the corresponding value (i.e., light, medium, dark) OR label your fabric by writing the code on the selvedge edge or corner of the corresponding fabric.
6. Gather 7 business size envelopes or plastic baggies in which you'll store your facets once cut apart. Label them with the letters A, B, C, D, E, F and G to correspond to your fabric codes.

Cutting Your Facets

7. With your first highlighter pen, trace the inside edge of the block on your FREEZER PAPER. This is the visual clue that will remind you to put the edges of these pieces on the straight of grain when you're ironing on the facets to the fabric. (The straight of grain is the grainline that runs parallel to the selvedge edge.) This step gives the block more stability.
8. Using your first highlighter pen, also trace on each side of the line between the printed sections on your FREEZER PAPER. Again, this is your visual clue to consider placing the highlighted edge (or the longest edge) on the straight of grain.
9. Using your second highlighter pen, place small "x" marks down the lines where you assembled the sections. This is your visual clue NOT to cut apart the freezer paper on these lines. Your freezer paper pattern will look like this:



THE RED CROSS: DIAMOND & DRAMA QUEENS NOVEMBER 2021 (18" PATTERN)

10. First cut off the background corners (7-1, 7-2, 7-3 and 7-4) of the freezer paper chart with scissors! These background corners must remain whole.

Then, with a ruler and rotary cutter you reserve for cutting paper, cut apart the gem and sort facets into the envelopes or baggies by letter code.

Note: If your ruler slips off the line a little bit, no problem! Just don't trim it up. Just be sure that you can still see any hashmarks on either side of the cut.

11. Arrange facets on the RIGHT SIDE of the fabric that corresponds to their color code, allowing $\frac{3}{4}$ " of space between each facet. Press with a hot iron, no steam.

Start by laying the larger pieces on your fabric first, working the smaller pieces in around them. Remember to place either the highlighted edge of a facet OR its longest side on the straight of grain – depending on which edge needs more stabilization -- as you arrange the pieces on the fabric.

If the freezer paper isn't adhering very well to the fabric, try heating the fabric first and then laying the freezer paper piece on top of it and press it down. (If you have lots of sizing or dye in your fabric, you may want to pre-wash your fabric. Extra chemicals sometimes prevent freezer paper from sticking to fabric.)

12. Once all your facets are ironed to the RIGHT SIDE of the fabric, relabel 7 of your envelopes or baggies with the numbers 1 through 7, corresponding to the 7 sections of the block. (Note: the background corners comprise Section 7.)

13. Using a rotary cutter and ruler, cut out each facet with a $\frac{1}{4}$ " seam allowance. Take care to make these $\frac{1}{4}$ " seam allowances as accurate and consistent as possible. Place the fabric facets in your envelopes or baggies by section number (i.e., 1 through 7).

If you feel more comfortable using fabric marking tools to mark the $\frac{1}{4}$ " seam allowance on the convex and concave curves of the facets and background pieces, by all means use that method. Those of you who are comfortable cutting a curve with a rotary cutter and ruler will be able to put those skills to work on this pattern. I have included a video on our Diamonds & Drama Queens web page that demonstrates how I like to cut curves using a rotary cutter and ruler.

14. Once all your facets are cut out and stored in their respective envelopes, remove the facets from the envelopes one by one and lay them out in numerical order to

THE RED CROSS: DIAMOND & DRAMA QUEENS NOVEMBER 2021

(18" PATTERN)

make sure that one hasn't accidentally wandered away.

Piecing Your Gem

15. Arrange facets into their piecing order using the chart you put up on your quilt room wall as your guide.

NOTE: I have created a "Piece Plan" that provides a step-by-step process to assemble the block. You'll find it at the end of this document.

16. To piece your facets, place RIGHT SIDES together (freezer paper will be inside the fabric sandwich).
17. Peek inside the seam allowance and line up the hash marks on each side of the two pieces. Ensure that the corners of each facet line up together.
18. Pin carefully along the seam OR use a clip OR use a glue product to secure the 2 pieces together.
19. Identify the 1/4" seam guide on your machine's plate. Position the pair of pinned facets under the presser foot so that the edge of your fabric sandwich is just a needle-width to the left of the 1/4" seam guide. This will prevent you from sewing into the freezer paper on the inside.
20. Stitch the seam line using a regular stitch length (i.e., 2.5). I backstitch at the beginning and the end only because it's been my habit to do so for 20 years. Some have said that's not a necessary step for them. Habits die hard!
21. Open the facets with both seams to one side. (Press to the darkest side OR the side that has the fewest intersecting seams.)
 - a. If there is a gap between the edges of your freezer paper, you can either re sew a little bit closer to the 1/4" seam guide OR you can pick up one of the templates and iron it next to the seam. Just be sure to trim the seam allowance down to 1/4".
 - b. If you have sewn into the freezer paper, give the two pieces a little tug to see if this frees the freezer paper. If you've really munched the freezer paper, consider ripping that section and re sewing.

Gaps and tucks change the position of the hashmarks along the sides of the 2 facets, which makes it a bit confusing when trying to match it up to its

THE RED CROSS: DIAMOND & DRAMA QUEENS NOVEMBER 2021 (18" PATTERN)

adjoining unit. In the end, though, perfection is NOT a priority. Once you've removed all the paper, no one will know the difference!

22. Continue to stitch the facets together, retaining the freezer paper on the front of each piece.

23. If facets come loose, simply iron back on.

TIP: If you want to remove the freezer paper after piecing major sections together, be sure to draw the hash marks onto the seam allowance before removing the freezer paper.

24. The background pieces (7-1 through 7-4) are the last to be sewn to the section. It's hard to piece curves with the freezer paper on the fabric, so remove the freezer paper before easing the curved background piece to the curved edge of the gem.

However, before you do so, be sure to draw the hash marks onto the seam allowance before removing the freezer paper. Those hashmarks will be extremely helpful as you ease the two curves together.

25. Once the gem is complete, remove the remaining freezer paper pieces and store them in your envelopes or baggies by color code if you plan on using them again. You can typically get 2 uses out of regular freezer paper, but I know some people who can squeeze 3 and even 4 uses out of their freezer paper pieces.

26. If little bits of freezer paper are stuck in the seam line, use a pair of tweezers to remove. If they are stubborn, try using seam ripper to remove them by pushing the bit of paper from the front to the back side of the fabric. Use tweezers to pull from between the seams.

CONGRATULATIONS!

PIECE PLAN FOR "THE CLARK PINK"

Section 1

- Sew together 1-1, 1-2, 1-3, 1-4 and 1-5 (to create Unit 1:5)
- Sew together 1-6 and Unit 1:5 (to create Unit 1:6)
- Sew together 1-7 to Unit 1:6 (to complete Section 1)

Section 2

- Sew together 2-1 and 2-2 (to create Unit 1:2)
- Sew together 2-3, 2-4, 2-5, 2-6 and 2-7 (to create Unit 3:7)
- Sew together Unit 1:2 and 3:7 (to complete Section 2)

Section 3

- Sew together 3-1 and 3-2 (to create Unit 1:2)
- Sew together 3-3, 3-4 and 3-5 (to create Unit 3:5)
- Sew together 3-6 to Unit 3:5 (to create Unit 3:6)
- Sew together Unit 1:2 and Unit 3:6 (to complete Section 3)

Section 4

- Sew together 4-1 and 4-2 (to create Unit 1:2)
- Sew together 4-3, 4-4, 4-5, 4-6 and 4-7 (to create Unit 3:7)
- Sew together Unit 1:2 and 3:7 (to complete Section 4)

Section 5

- Sew together 5-1, 5-2, 5-3, 5-4 and 5-5 (to create Unit 1:5)
- Sew together 5-6 and Unit 1:5 (to create Unit 1:6)
- Sew together 5-7 to Unit 1:6 (to complete Section 5)

Section 6

- Sew together 6-1 and 6-2 (to create Unit 1:2)
- Sew together 6-3, 6-4 and 6-5 (to create Unit 3:5)
- Sew together 6-6 to Unit 3:5 (to create Unit 3:6)
- Sew together Unit 1:2 and Unit 3:6 (to complete Section 6)

Putting Sections Together

- Sew together Section 1, Section 2, and Section 3.
- Sew together Section 4, Section 5, and Section 6.
- Sew the two halves of your gem together.
- Use fabric marking tools to extend the hash marks from the freezer paper onto the seam allowance fabric on both the pieced gem and the four background pieces that make up Section 7.
- One corner at a time so that you don't lose track of which background piece should be pieced to which corner, remove the freezer paper from both the pieced gem and the background piece and ease in the curve to complete the gem block.