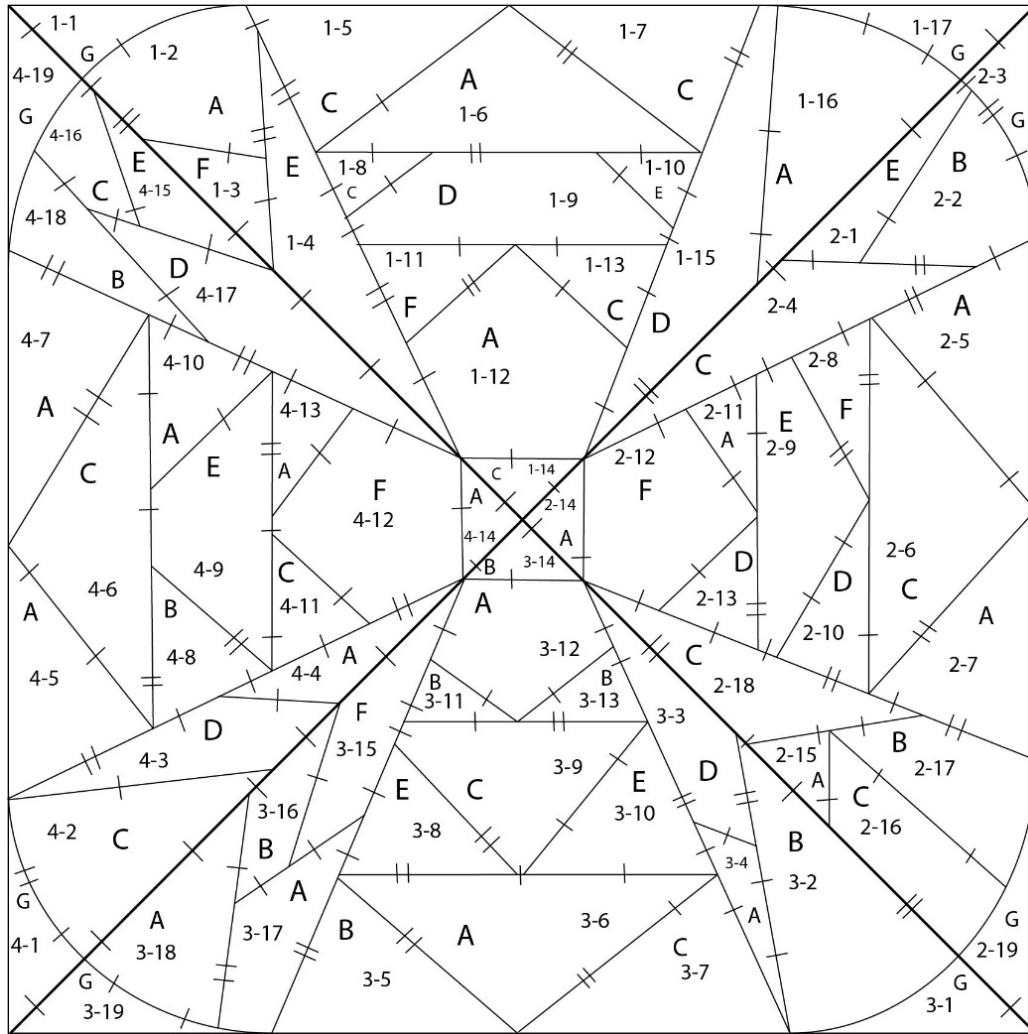


# EVELYN'S ENVY: DIAMOND & DRAMA QUEENS APRIL (18" PATTERN)

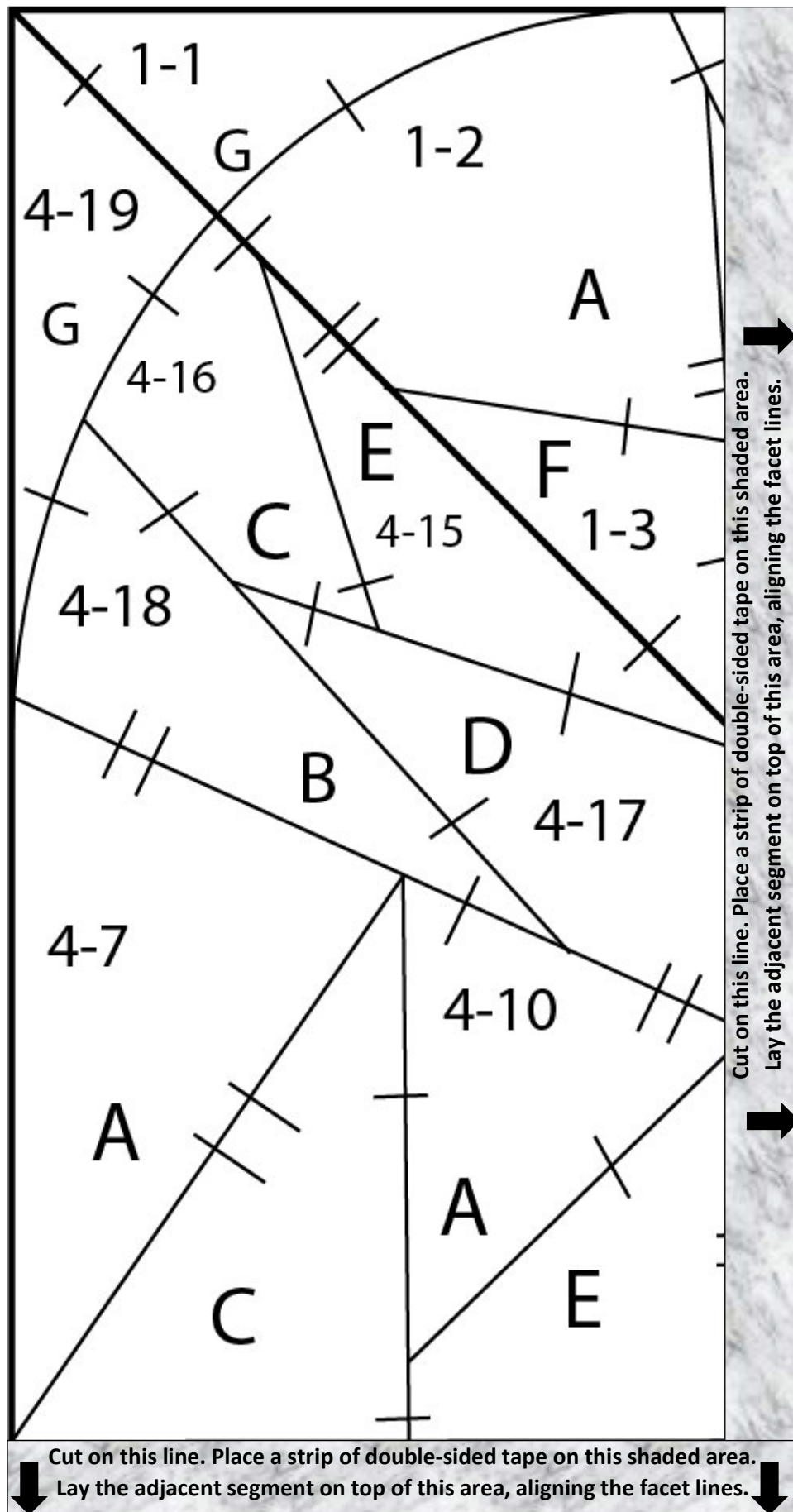


Our *Diamonds & Drama Queens* pattern for April is inspired by the **McLean Diamond**, a spectacular 31.26-carat cushion-cut diamond owned by Evelyn Walsh McLean. Ms. McLean also owned the famous Hope Diamond. After Ms. McLean sold the diamond, it was obtained by the Duchess of Windsor who was formerly known as Wallis Simpson before she married the King of England. King Edward VIII eventually abdicated so that he could marry “the woman he loved”.

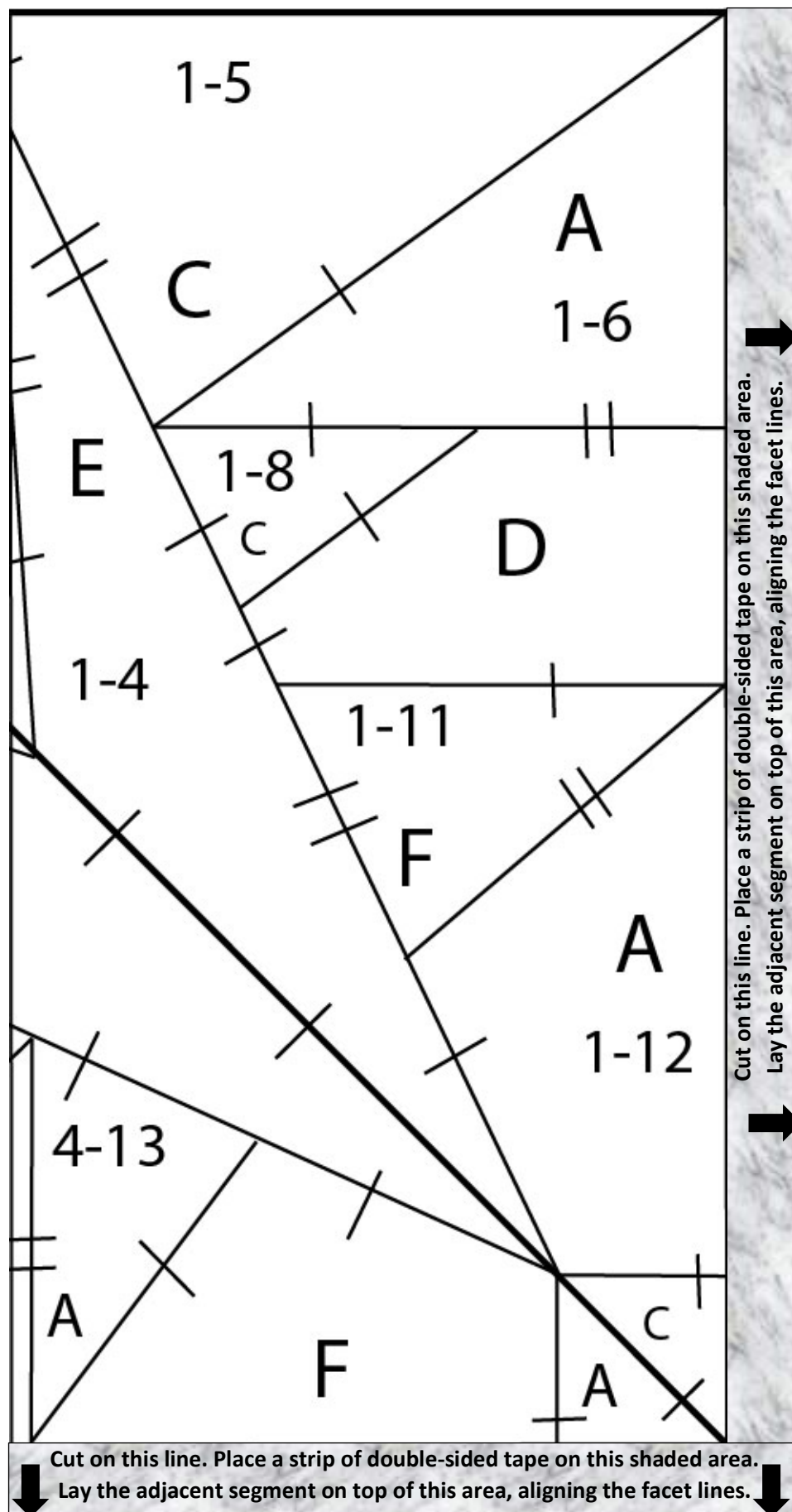
The pattern above showcases the lovely square shape with rounded edges and four facets radiating from the center culet of the gem. Have fun with it!



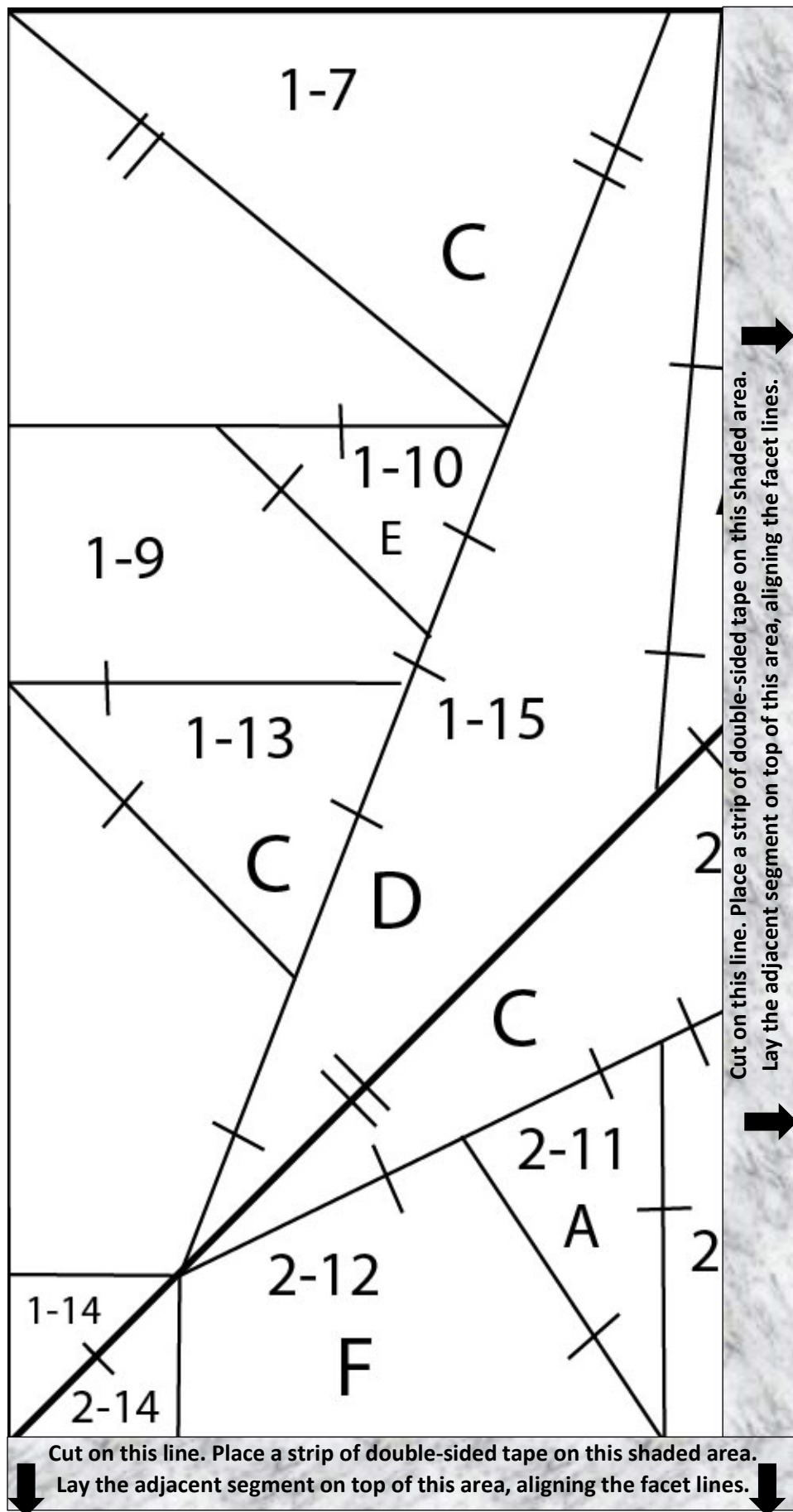
# EVELYN'S ENVY: DIAMOND & DRAMA QUEENS APRIL (18" PATTERN)



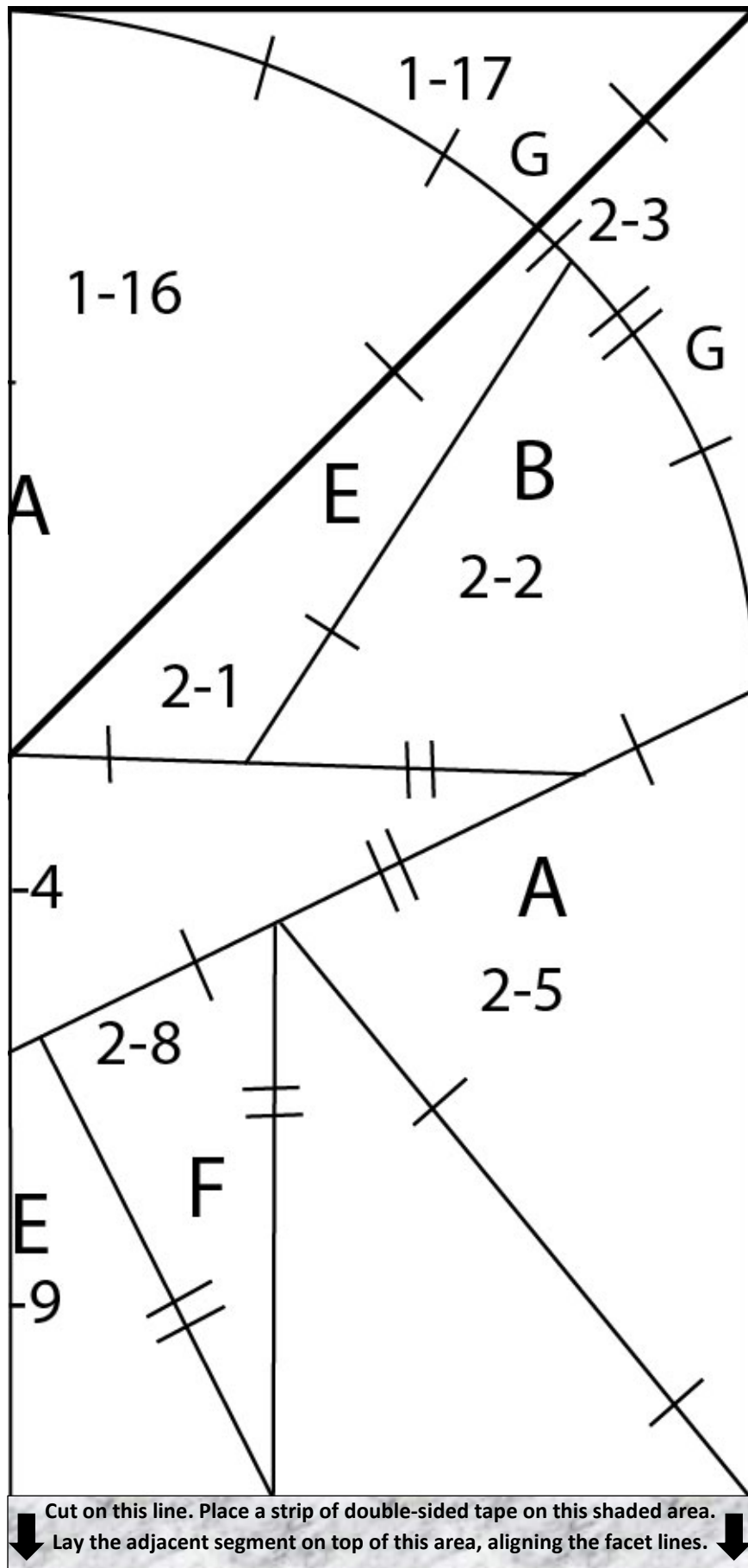
# EVELYN'S ENVY: DIAMOND & DRAMA QUEENS APRIL (18" PATTERN)



# EVELYN'S ENVY: DIAMOND & DRAMA QUEENS APRIL (18" PATTERN)

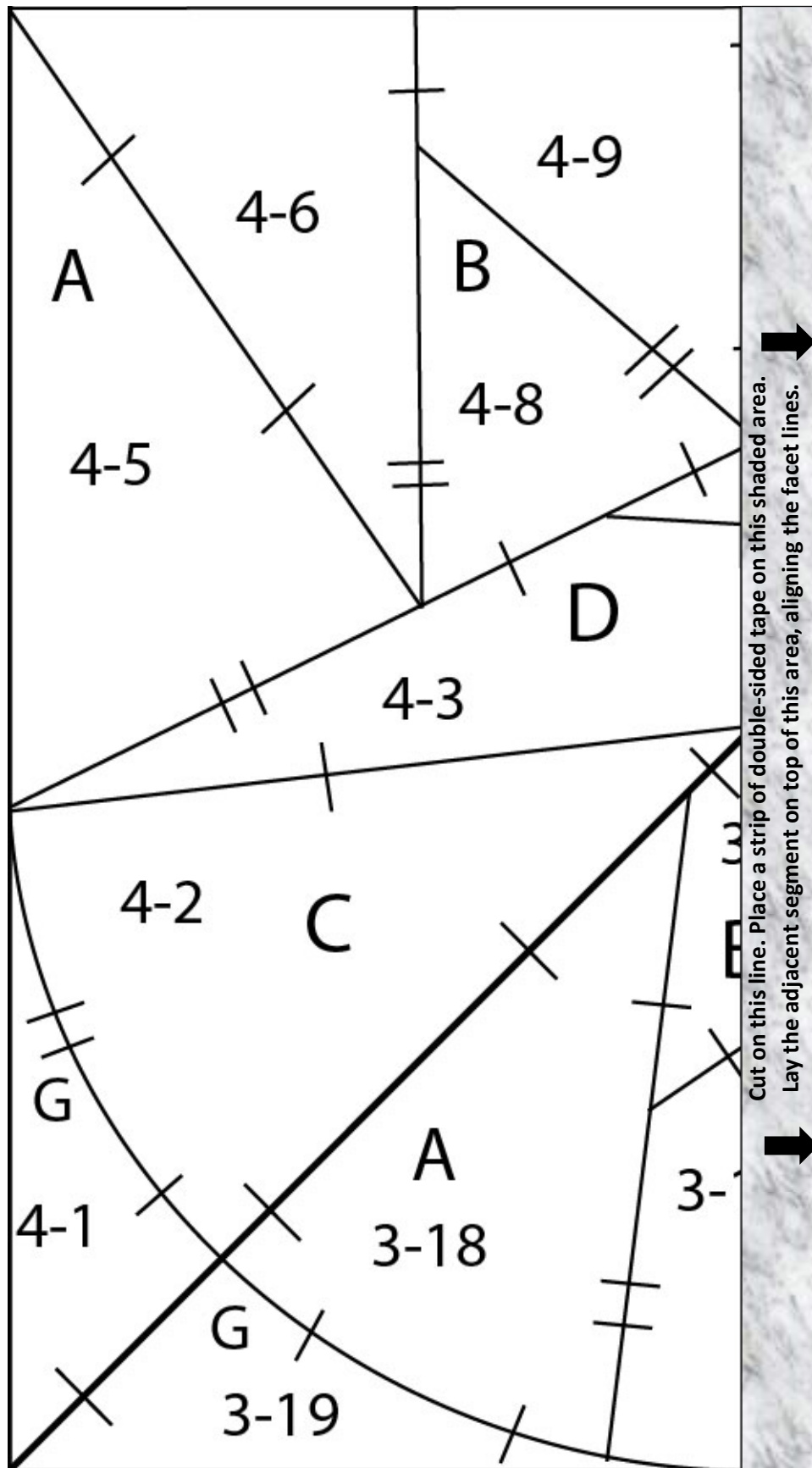


# EVELYN'S ENVY: DIAMOND & DRAMA QUEENS APRIL (18" PATTERN)

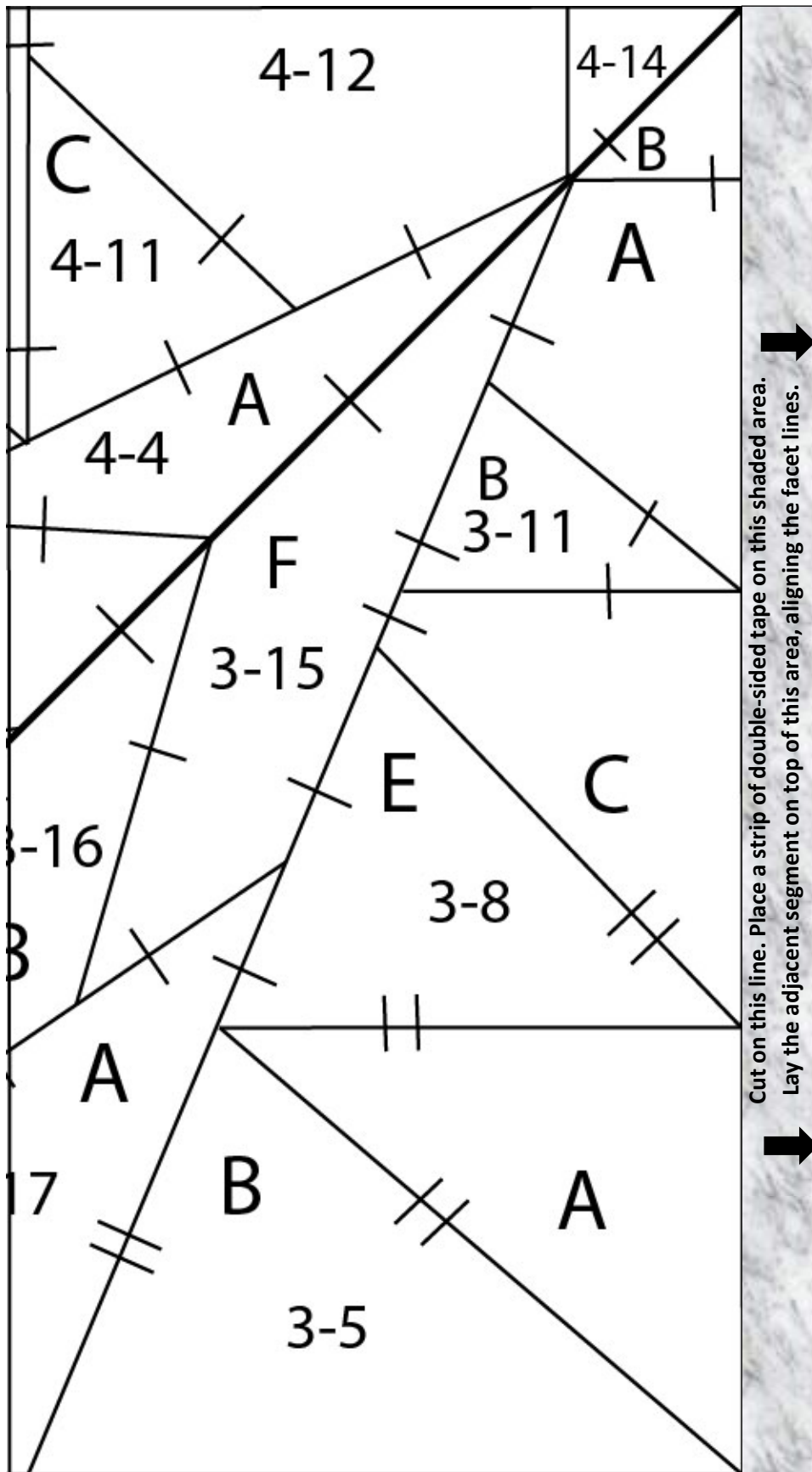




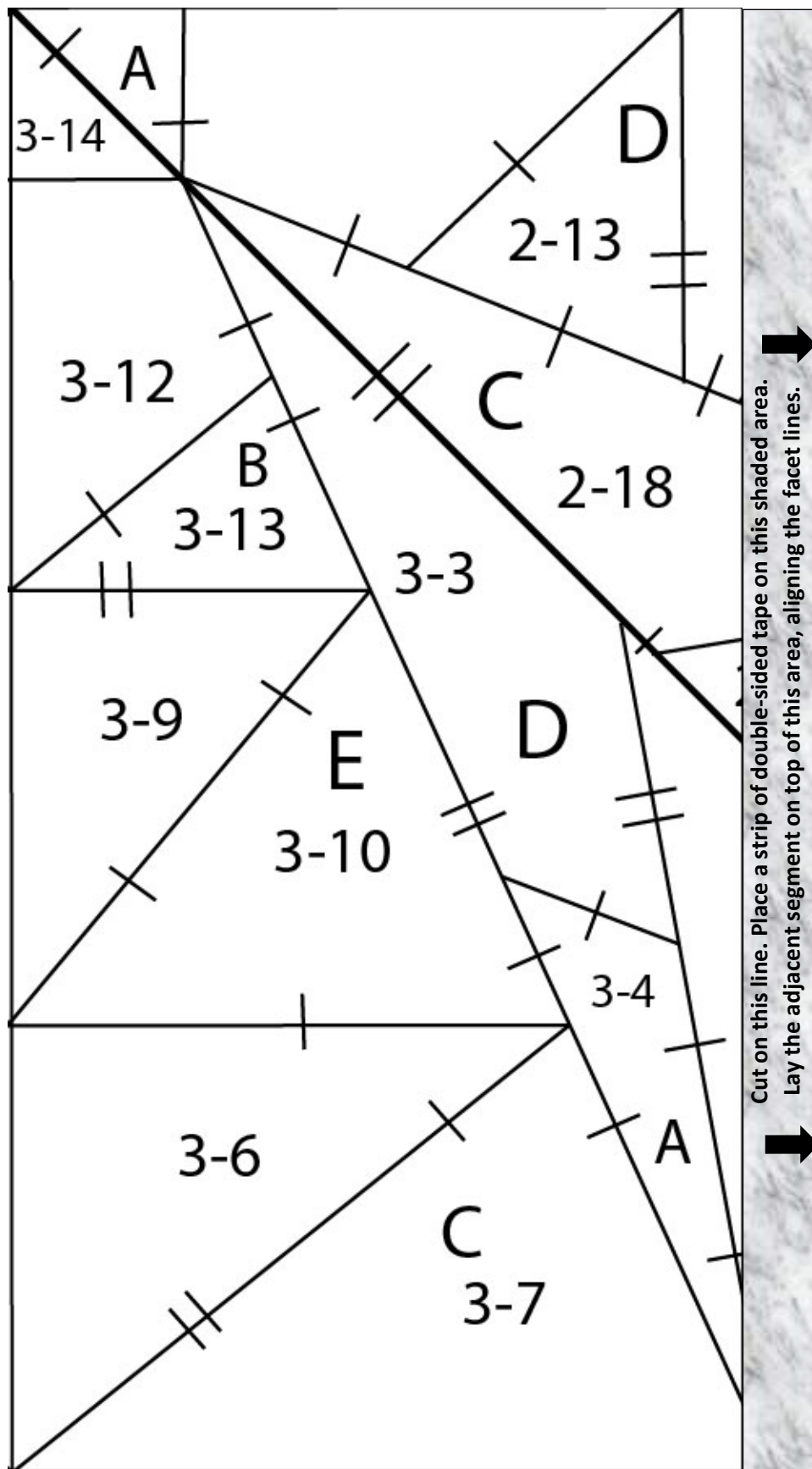
# EVELYN'S ENVY: DIAMOND & DRAMA QUEENS APRIL (18" PATTERN)



# EVELYN'S ENVY: DIAMOND & DRAMA QUEENS APRIL (18" PATTERN)

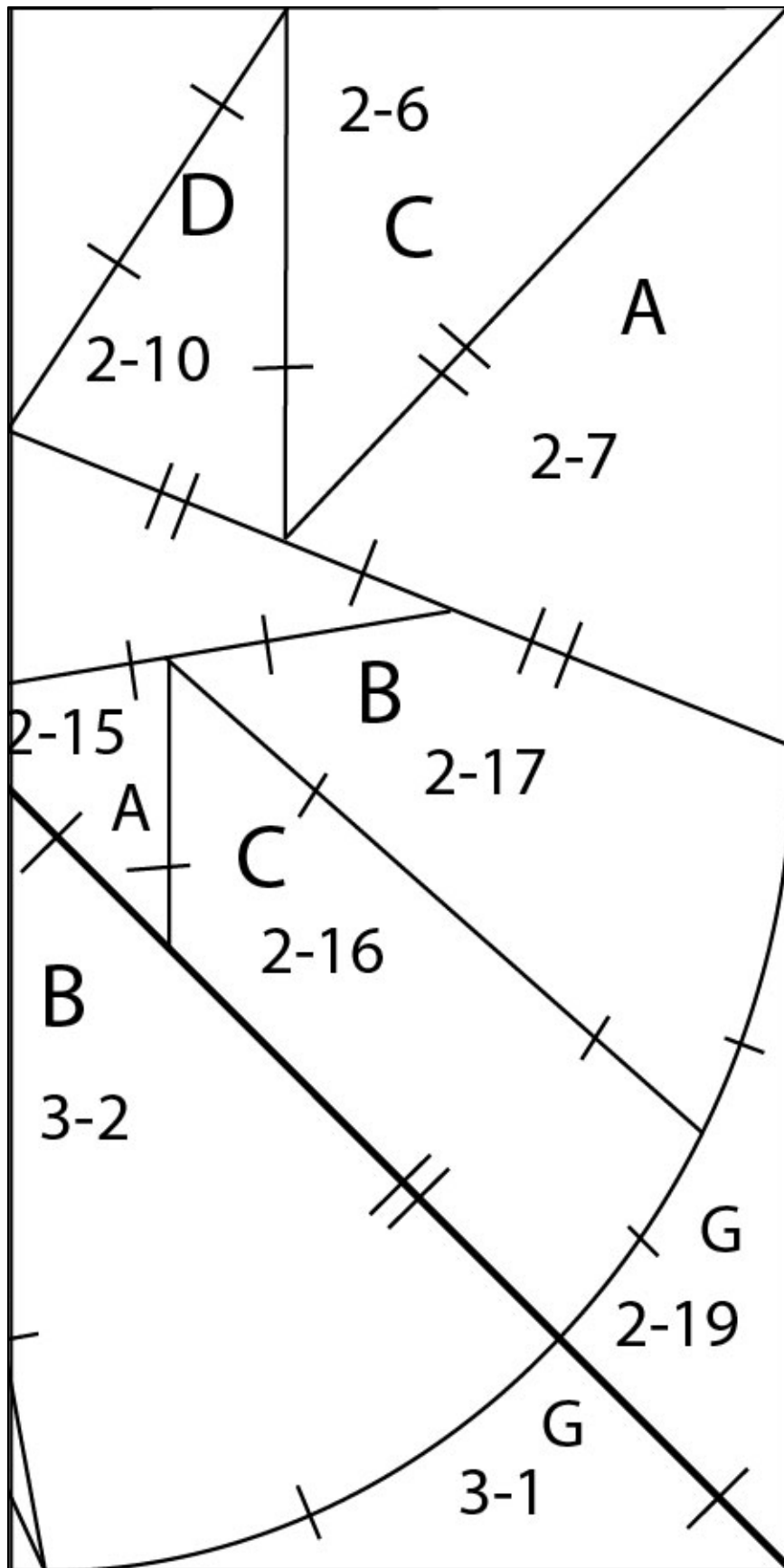


# EVELYN'S ENVY: DIAMOND & DRAMA QUEENS APRIL (18" PATTERN)





# EVELYN'S ENVY: DIAMOND & DRAMA QUEENS APRIL (18" PATTERN)



# EVELYN'S ENVY: DIAMOND & DRAMA QUEENS APRIL (18" PATTERN)

A - Lightest Light (or White)

E – Dark

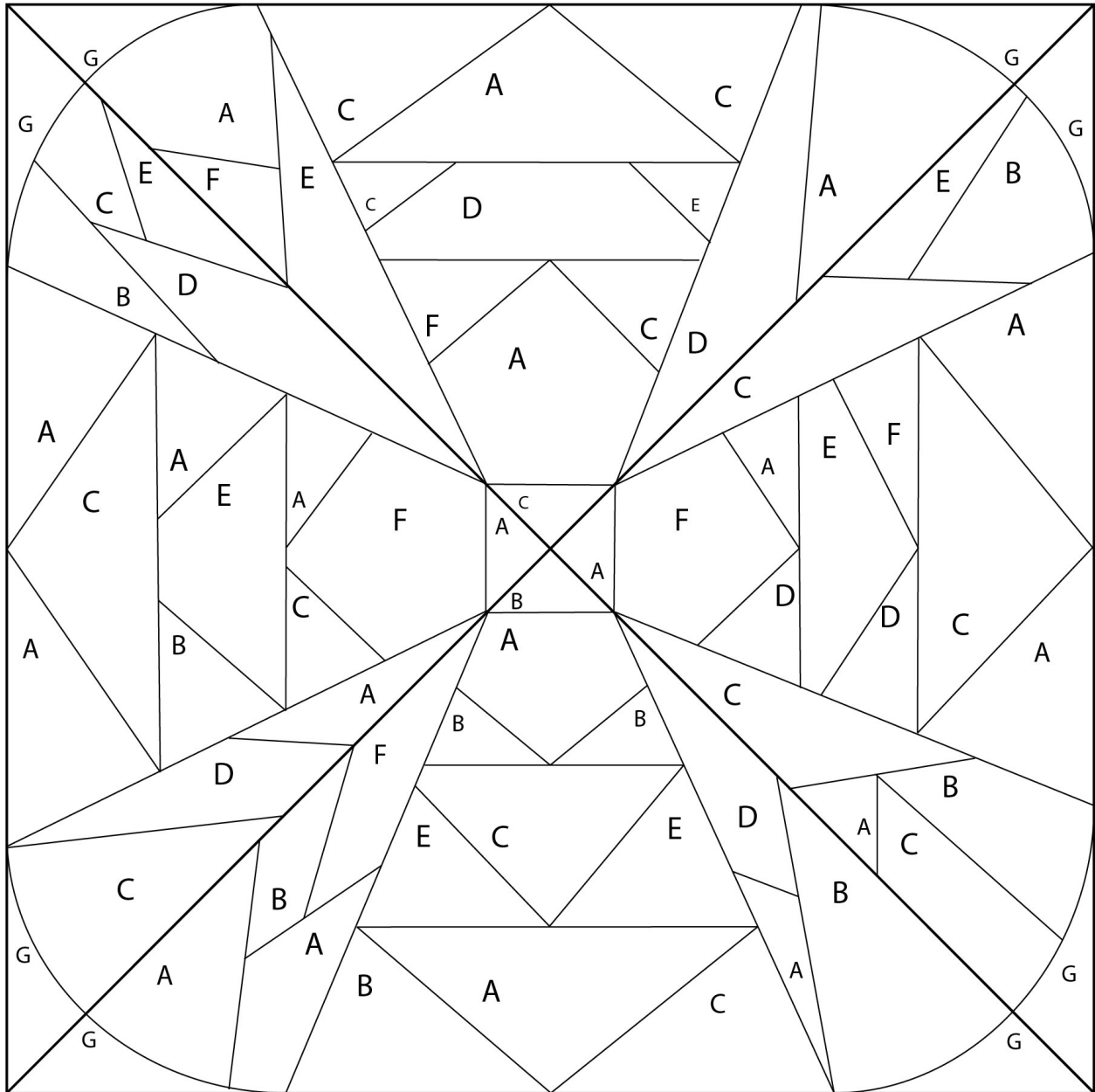
B – Light

F - Darkest Dark (or Black)

C –Medium-Light

G - Background

D – Medium-Dark



# EVELYN'S ENVY: DIAMOND & DRAMA QUEENS APRIL (18" PATTERN)

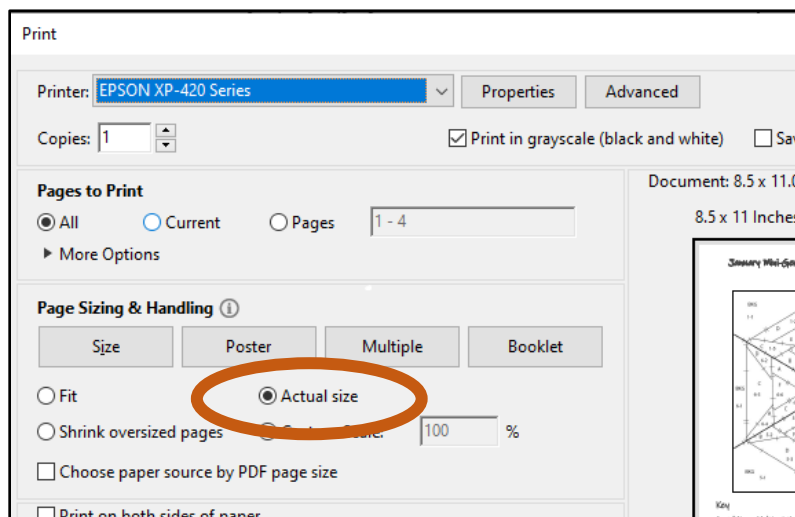
## Supplies

- Freezer paper – You can purchase a roll of freezer paper from the grocery store (Reynold's Freeze Paper). Be sure that you're not purchasing wax paper or parchment paper. Neither of these products will work with this project. You can also purchase pre-cut sheets that are commercially available. One product is Quilter's Freezer Paper by C&T Publishing, available on Amazon.com.
- Double-sided tape
- Highlighter pens in 2 different colors
- 18" or 24" ruler with a 1/4" measurement
- Small ruler (12") with a 1/4" measurement
- Domestic sewing machine and thread assortment (neutrals or colors that match your fabrics)
- Scissors and rotary cutting tools (cutters and mat) – We'll be cutting both paper and fabric, so if you prefer to use 2 rotary cutters (one with an old blade and one new one) that would be ideal.
- Iron and ironing pad (or board)
- Pins, clips, or fabric glue
- 7 Fabrics according to the colorway chart

## Instructions

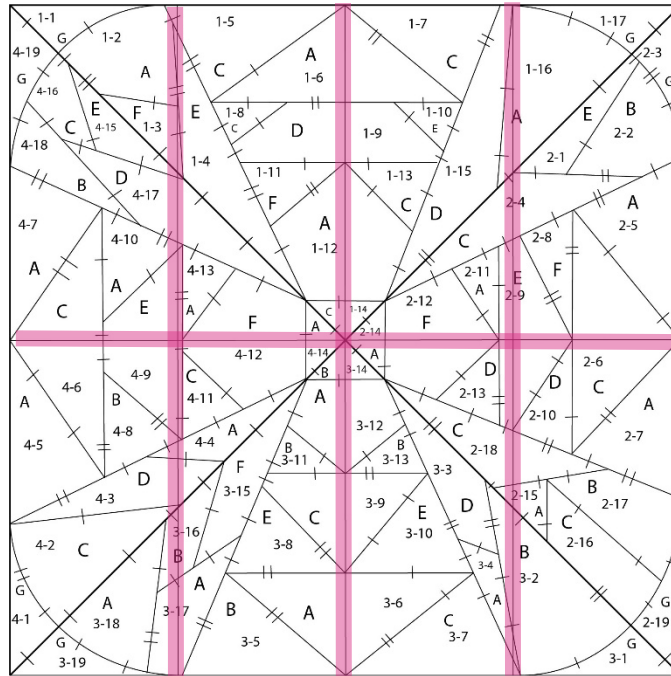
### Preparation

1. Print pages 2-9 of this document with the "Actual Size" print option selected onto a piece of 8.5" x 11" freezer paper. Printing "Actual Size" will ensure that your segments will print out so that your block will be exactly 18" square. This is the chart you will cut up.



## EVELYN'S ENVY: DIAMOND & DRAMA QUEENS APRIL (18" PATTERN)

2. Print pages 2-9 of this document onto regular paper using the "Actual Size" setting. This will be the copy you will pin or tape to your quilt room wall. It will be your KEY to help you put your block back together.
3. Assemble the freezer paper segments with double-sided tape, aligning the facet lines. Take one of your highlighter pens and mark the center vertical and horizontal line on which you assembled the segments. This will be your reminder to NOT cut apart facets on this line. If you do, you will be cutting apart facets that are meant to remain whole. Your taped-together freezer paper will look like this:

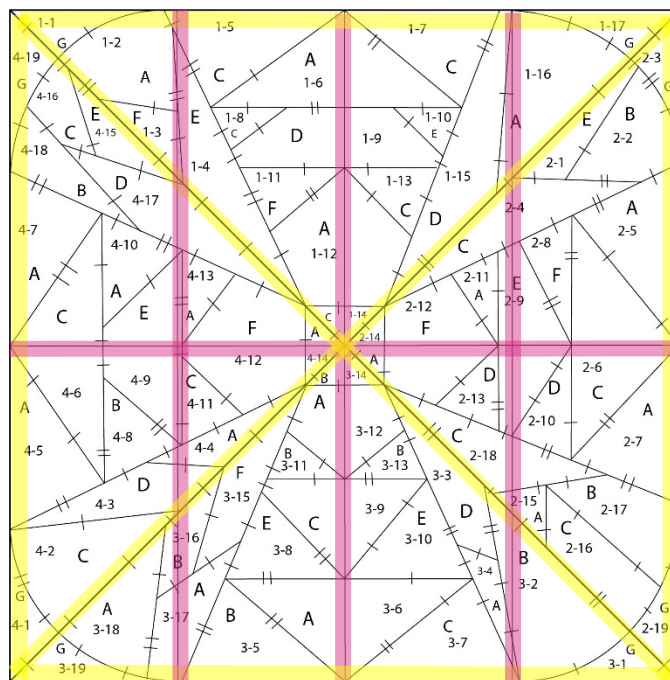


4. Identify 7 fabrics in a range of values to use in your block. On page 10, you'll find a pattern with just the color codes in place. You can use this to experiment with colorways.
5. Attach a snippet of fabric next to each code of the corresponding value (i.e., light, medium, dark) OR label your fabric by writing the code on the selvedge edge or corner of the corresponding fabric.
6. Gather 6 business size envelopes or plastic baggies in which you'll store your facets once cut apart. Label them with the letters A, B, C, D, E, F and G to correspond to your fabric codes.

# EVELYN'S ENVY: DIAMOND & DRAMA QUEENS APRIL (18" PATTERN)

## Cutting Your Facets

7. With your second highlighter pen, trace the inside edge of the block on your FREEZER PAPER. This is the visual clue that will remind you to put the edges of these pieces on the straight of grain when you're ironing on the facets to the fabric. (The straight of grain is the grainline that runs parallel to the selvedge edge.) This step gives the block more stability.
8. Using your second highlighter pen, also trace on each side of the diagonal lines that separate the various sections of the block on your FREEZER PAPER. (Remember, you can tell the difference between the sections by the first number of the hyphenated number code.) Your freezer paper pattern will look like this.



9. With a ruler and rotary cutter, you reserve for cutting paper, cut apart the freezer paper template and sort facets into the envelopes or baggies by letter code.  
**Note: If your ruler slips off the line a little bit, no problem! Just don't trim it up. Just be sure that you can still see any hashmarks on either side of the cut.**



## EVELYN'S ENVY: DIAMOND & DRAMA QUEENS APRIL (18" PATTERN)

10. Arrange facets on the RIGHT SIDE of the fabric that corresponds to their color code, allowing  $\frac{3}{4}$ " of space between each facet. Press with a hot iron, no steam.

If the freezer paper isn't adhering very well to the fabric, try heating the fabric first and then laying the freezer paper piece on top of it and press it down. (If you have lots of sizing or dye in your fabric, you may want to pre-wash your fabric. Extra chemicals sometimes prevent freezer paper from sticking to fabric.)

11. Once all your facets are ironed to the RIGHT SIDE of the fabric, relabel 4 of your envelopes or baggies with the numbers 1 through 4, corresponding to the 4 sections of the block.
12. Using a rotary cutter and small ruler, cut out each facet with a  $\frac{1}{4}$ " seam allowance. Take care to make these  $\frac{1}{4}$ " seam allowances as accurate and consistent as possible. Place the fabric facets in your envelopes or baggies by section number (i.e., 1 through 4).
13. Once all your facets are cut out and stored in their respective envelopes, remove the facets from the envelopes one by one and lay them out in numerical order to make sure that one hasn't accidentally wandered away.

### Piecing Your Gem

14. Arrange facets into their piecing order using the chart you put up on your quilt room wall as your guide.

**NOTE: I have created a "Piece Plan" that provides a step-by-step process to assemble the block. You'll find it at the end of this document.**

15. To piece your facets, place RIGHT SIDES together (freezer paper will be inside the fabric sandwich).
16. Peek inside the seam allowance and line up the hash marks on each side of the two pieces. Ensure that the corners of each facet line up together.
17. Pin carefully along the seam OR use a clip OR use a glue product to secure the 2 pieces together.
18. Identify the  $\frac{1}{4}$ " seam guide on your machine's plate.
19. Position the pair of pinned facets under the presser foot so that the edge of your fabric sandwich is just a needle-width to the left of the  $\frac{1}{4}$ " seam guide. This will prevent you from sewing into the freezer paper on the inside.

## EVELYN'S ENVY: DIAMOND & DRAMA QUEENS APRIL (18" PATTERN)

20. Stitch the seam line using a regular stitch length (i.e., 2.5). I backstitch at the beginning and the end only because it's been my habit to do so for 20 years. Some have said that's not a necessary step for them. Habits die hard!
  21. Open the facets with both seams to one side. (Press to the darkest side OR the side that has the fewest intersecting seams.)
    - a. If there is a gap between the edges of your freezer paper, you can either resew a little bit closer to the 1/4" seam guide OR you can pick up one of the templates and iron it next to the seam. Just be sure to trim the seam allowance down to 1/4".
    - b. If you have sewn into the freezer paper, give the two pieces a little tug to see if this frees the freezer paper. If you've really munched the freezer paper, consider ripping that section and resewing. Gaps and tucks change the position of the hashmarks along the sides of the 2 facets, which makes it a bit confusing when trying to match it up to its adjoining unit. In the end, though, perfection is NOT a priority and, once you've removed all the paper from your gem, no one will know the difference!
  22. Continue to stitch the facets together, retaining the freezer paper on the front of each piece.
  23. If facets come loose, simply iron back on.
- TIP: If you want to remove the freezer paper after piecing major sections together, be sure to draw the hash marks onto the seam allowance before removing the freezer paper.**
24. Once the gem is complete, remove the remaining freezer paper pieces and store them in your envelopes or baggies by color code if you plan on using them again. You can typically get 2 uses out of regular freezer paper, but I know some people who can squeeze 3 and even 4 uses out of their freezer paper pieces!
  25. If little bits of freezer paper are stuck in the seam line, use a pair of tweezers to remove. If they are stubborn, try using seam ripper to remove them by pushing the bit of paper from the front to the back side of the fabric. Use tweezers to pull from between the seams.

# Congratulations!

## PIECE PLAN FOR 'EVELYN'S ENVY'

### Section 1

- With a fabric marking pencil or chalk, extend the hashmarks into the seam allowances of 1-1 and 1-2
- Once the hashmarks are marked in the seam allowance, remove the freezer paper from these 2 facets.
- Sew together 1-1 and 1-2, easing in the gentle curve and aligning the hashmarks in the curved seam allowance (to create Unit 1:2)
- Sew together 1-3 and Unit 1:2 (to create Unit 1:3)
- Sew together 1-4 and Unit 1:3 (to create Unit 1:4)
- Sew together 1-5, 1-6 and 1-7 (to create Unit 5:7)
- Sew together 1-8, 1-9 and 1-10 (to create Unit 8:10)
- Sew together 1-11, 1-12 and 1-13 (to create Unit 11:13)
- Sew together 1-14 and Unit 11:13 (to create Unit 11:14)
- Sew together Unit 5:7, Unit 8:10 and Unit 11:14 (to create Unit 5:14)
- Sew together 1-15 and Unit 5:14 (to create Unit 5:15)
- With a fabric marking pencil or chalk, extend the hashmarks into the seam allowances of 1-16 and 1-17
- Once the hashmarks are marked in the seam allowance, remove the freezer paper from these 2 facets.
- Sew together 1-16 and 1-17, easing in the gentle curve and aligning the hashmarks in the curved seam allowance (to create Unit 16:17)
- Sew together Unit 1:4, Unit 5:15 and Unit 16:17 (to complete Section 1)

## Section 2

- Sew together 2-1 and 2-2 (to create Unit 1:2)
- With a fabric marking pencil or chalk, extend the hashmarks into the seam allowances of Unit 1:2 and 2-3
- Once the hashmarks are marked in the seam allowance, remove the freezer paper from these 3 facets.
- Sew together Unit 1:2 and 2-3, easing in the gentle curve and aligning the hashmarks in the curved seam allowance (to create Unit 1:3)
- Sew together 2-4, Unit 1:3 (to create Unit 1:4)
- Sew together 2-5, 2-6 and 2-7 (to create Unit 5:7)
- Sew together 2-8, 2-9 and 2-10 (to create Unit 8:10)
- Sew together 2-11, 2-12 and 2-13 (to create Unit 11:13)
- Sew together 2-14 and Unit 11:13 (to create Unit 11:14)
- Sew together Unit 5:7, Unit 8:10 and Unit 11:14 (to create Unit 5:14)
- Sew together 2-15, 2-16 and 2-17 (to create Unit 15:17)
- Sew together Unit 15:17 and 2-18 (to create Unit 15:18)
- With a fabric marking pencil or chalk, extend the hashmarks into the seam allowances of Unit 15:18 and 2-19
- Once the hashmarks are marked in the seam allowance, remove the freezer paper from these facets.
- Sew together Unit 15:18 and 2-19, easing in the gentle curve and aligning the hashmarks in the curved seam allowance (to create Unit 15:19)
- Sew together Unit 1:4, Unit 5:14 and Unit 15:19 (to complete Section 2)

### Section 3

- With a fabric marking pencil or chalk, extend the hashmarks into the seam allowances of 3-1 and 3-2
- Once the hashmarks are marked in the seam allowance, remove the freezer paper from these 2 facets.
- Sew together 3-1 and 3-2, easing in the gentle curve and aligning the hashmarks in the curved seam allowance (to create Unit 1:2)
- Sew together 3-3 and 3-4 (to create Unit 3:4)
- Sew together Unit 1:2 and 3:4 (to create Unit 1:4)
- Sew together 3-5, 3-6 and 3-7 (to create Unit 5:7)
- Sew together 3-8, 3-9 and 3-10 (to create Unit 8:10)
- Sew together 3-11, 3-12 and 3-13 (to create Unit 11:13)
- Sew together 3-14 and Unit 11:13 (to create Unit 11:14)
- Sew together Unit 5:7, Unit 8:10 and Unit 11:14 (to create Unit 5:14)
- Sew together 3-15 and 3-16 (to create 15:16)
- Sew together 3-17 and Unit 15:16 (to create Unit 15:17)
- Sew together 3-18 and Unit 15:17 (to create Unit 15:18)
- With a fabric marking pencil or chalk, extend the hashmarks into the seam allowances of Unit 15:18 and 3-19
- Once the hashmarks are marked in the seam allowance, remove the freezer paper from these facets.
- Sew together Unit 15:18 and 3-19, easing in the gentle curve and aligning the hashmarks in the curved seam allowance (to create Unit 15:19)
- Sew together Unit 1:4, Unit 5:14 and Unit 15:19 (to complete Section 3)



## Section 4

- With a fabric marking pencil or chalk, extend the hashmarks into the seam allowances of 4-1 and 4-2
- Once the hashmarks are marked in the seam allowance, remove the freezer paper from these 2 facets.
- Sew together 4-1 and 4-2, easing in the gentle curve and aligning the hashmarks in the curved seam allowance (to create Unit 1:2)
- Sew together 4-3 and 4-4 (to create Unit 3:4)
- Sew together Unit 1:2 and 3:4 (to create Unit 1:4)
- Sew together 4-5, 4-6 and 4-7 (to create Unit 5:7)
- Sew together 4-8, 4-9 and 4-10 (to create Unit 8:10)
- Sew together 4-11, 4-12 and 4-13 (to create Unit 11:13)
- Sew together 4-14 and Unit 11:13 (to create Unit 11:14)
- Sew together Unit 5:7, Unit 8:10 and Unit 11:14 (to create Unit 5:14)
- Sew together 4-15 and 4-16 (to create 15:16)
- Sew together 4-17 and Unit 15:16 (to create Unit 15:17)
- Sew together 4-18 and Unit 15:17 (to create Unit 15:18)
- With a fabric marking pencil or chalk, extend the hashmarks into the seam allowances of Unit 15:18 and 4-19
- Once the hashmarks are marked in the seam allowance, remove the freezer paper from these facets.
- Sew together Unit 15:18 and 4-19, easing in the gentle curve and aligning the hashmarks in the curved seam allowance (to create Unit 15:19)
- Sew together Unit 1:4, Unit 5:14 and Unit 15:19 (to complete Section 4)

## Putting Sections Together

- Sew together Section 1 and Section 2, taking care to match the points where the gem and background meet. (See highlighted area below.)
- Sew together Section 3 and Section 4, taking care to match the points where the gem and background meet. (See highlighted area below.)
- Sew the two halves of your block together, taking care to match the points where the gem and background meet. (See highlighted area below.)

